

# diNovo Mini™

for PLAYSTATION®3



Logitech



User's Guide

# Contents

Welcome	3
Product package	4
Your diNovo Mini	5
diNovo Mini at a glance (top)	6
diNovo Mini at a glance (base)	7
Installation	8
Using diNovo Mini with PLAYSTATION®3	11
Tips and troubleshooting	16
Service and support	17
Compliance and FCC statement	19
Logitech hardware product limited warranty	21

## Welcome

**Thank you** for purchasing the Logitech® diNovo Mini™ for PLAYSTATION®3.

This document provides a comprehensive guide to using your new diNovo Mini with your PLAYSTATION®3 game console.

If you need more information about this product, visit [www.logitech.com](http://www.logitech.com)

## Product package



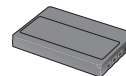
diNovo Mini



Power supply



USB mini-receiver  
(not required for PLAYSTATION®3)



Rechargeable lithium-ion battery



CD-ROM with SetPoint™ software  
(not required for PLAYSTATION®3)



Cleaning cloth

## Your diNovo Mini

The Logitech® diNovo Mini™ puts you in total control of your PLAYSTATION®3 experience with a palm-sized keyboard plus media remote and ClickPad™.

Sit back and enjoy movies and music, share photos, and surf the Web—from anywhere in the room. Bluetooth® wireless technology delivers reliable operation from up to 30 feet (9 meters) under most conditions.

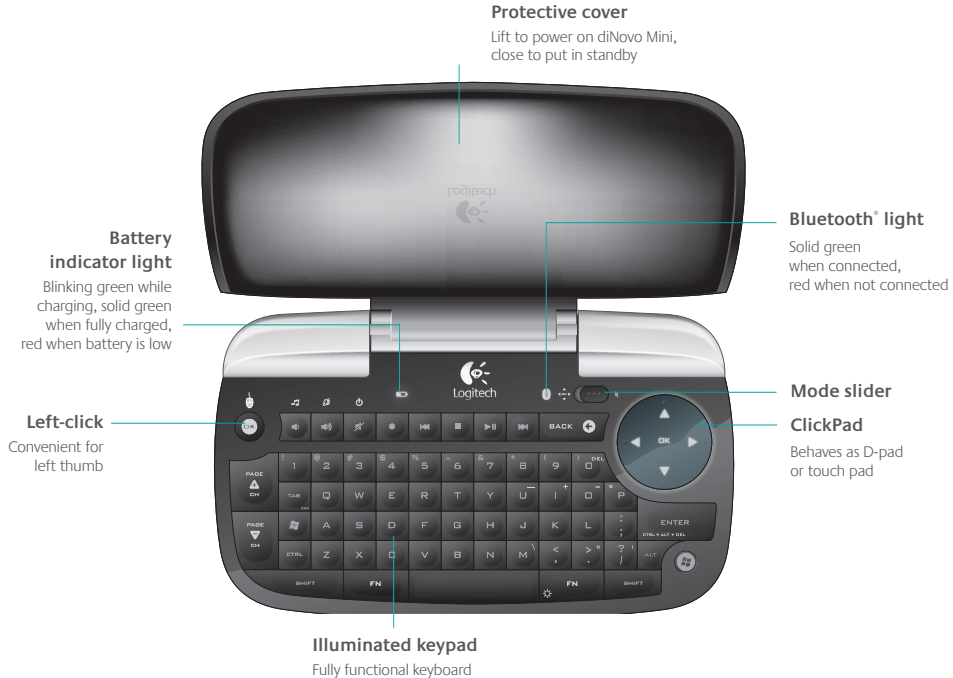
The diNovo Mini gives you the advantages of a full-size keyboard. You can type search text, URLs, and text messages. Automatic backlighting allows effortless text entry, even in low light.

The dual-purpose ClickPad gives you more ways to enjoy your digital life. Use it as a touch pad to point, scroll, and click, or as a directional pad to navigate your favorite games and media.

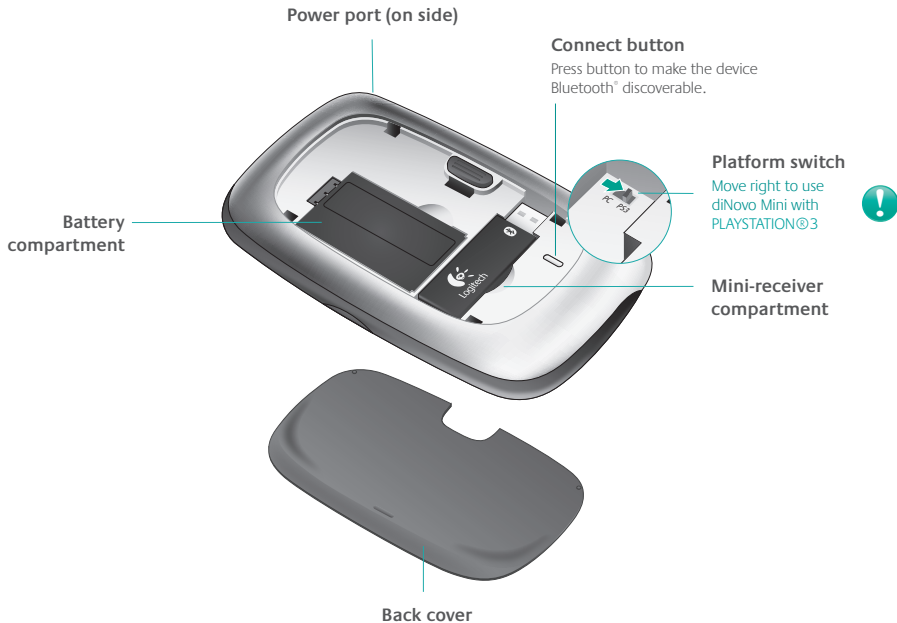
The advanced lithium-ion battery recharges faster and lasts longer—up to one month between charges.

Compact and stylish, the diNovo Mini helps keep your home free of clutter.

## diNovo Mini at a glance (top)



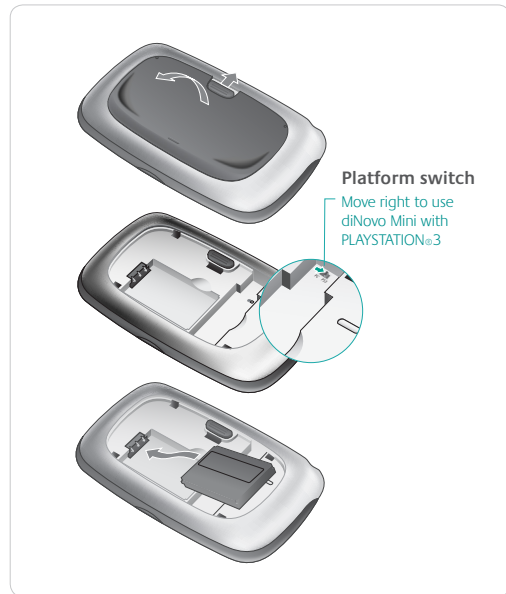
## diNovo Mini at a glance (base)



# Installation

## Insert battery

- 1 Open the back cover of the diNovo Mini by sliding the tab up.
- 2 To enable the device for PLAYSTATION®3, move the platform switch to the right.
- 3 Insert the lithium-ion battery as shown in the illustration.

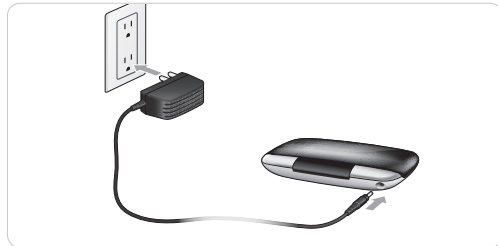




# Installation

## Connect power



- 1 Plug the AC cable into the power port on the side of the diNovo Mini.
- 2 Plug the AC adapter into a wall socket to start charging the lithium-ion battery. A full charge is about 4 hours for up to one month of use. A 10-minute charge provides about 1 day of use.

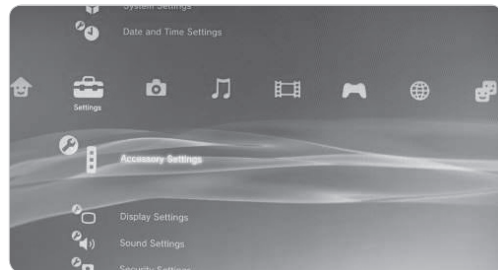


## Set up the Bluetooth® connection

- 1 Power on the PLAYSTATION®3 and display the Home menu.
- 2 Press the red connect button in the compartment on the underside of your diNovo Mini.

The Bluetooth LED on your diNovo Mini should start blinking.

- 3 From the Home menu, select Accessory Settings  under Settings .



## Installation

- 4 Select Register Bluetooth® Device.
- 5 Select Register Keyboard/Mouse.
- 6 Select Start Scanning

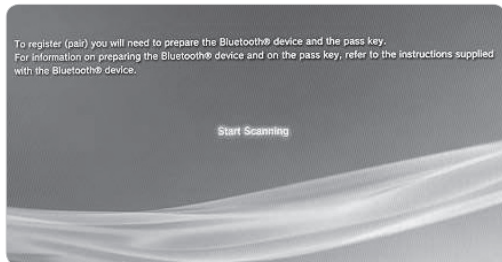
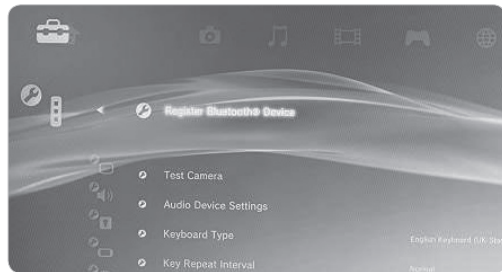
The console displays a list of Bluetooth® devices within range of the console.

- 7 Select Logitech diNovo Mini.

The PLAYSTATION®3 displays a randomly generated pass key.

- 8 On your diNovo Mini keyboard, enter the provided pass key and press Enter to pair the device with your PLAYSTATION®3.

When a message appears confirming that registration is complete, you can start using your diNovo Mini with the console.



# Using diNovo Mini

## Powering on

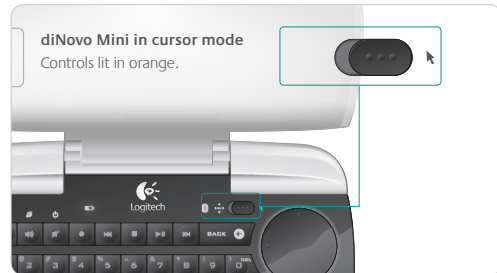
Power on your diNovo Mini by lifting the protective cover. Close the cover to put the keyboard into standby mode, reducing power usage.

## Changing modes

The diNovo Mini offers two operating modes, a **media remote** mode for navigating PLAYSTATION®3 menus and a **cursor mode** for familiar keyboard and touch pad functions.

In media remote mode, the keyboard controls map to buttons on your PLAYSTATION®3 Sixaccess controller. (See pages 12-13)

Switch between modes by moving the **mode slider** at the top of the keypad. Move the slider to the left to place the diNovo Mini in media remote mode; move it to the right for cursor mode.



# Using diNovo Mini with PLAYSTATION®3

## Controls in media remote mode

### OK

Select an item. (Use your left thumb for faster selection.) Press while holding down the FN key to view options.



### Esc

Cancels an operation



### Stop

Operates as Back



### ClickPad

Operates as a D-pad or track pad. Use our direction arrows for navigation. Press OK (center) to select an item.



### Enter key

Press to select an item.



### Home button

Displays the Home menu



### Keypad

Press a letter key to select names that begin with that letter.

### FN key

Hold down to enable the functions labeled in blue. Press to turn on backlighting.

## Using diNovo Mini with PLAYSTATION®3

### Sixaxis controls

#### Directional buttons

Use four direction arrows to select on-screen categories and items.



Displays the options menu/control panel

Cancels an operation

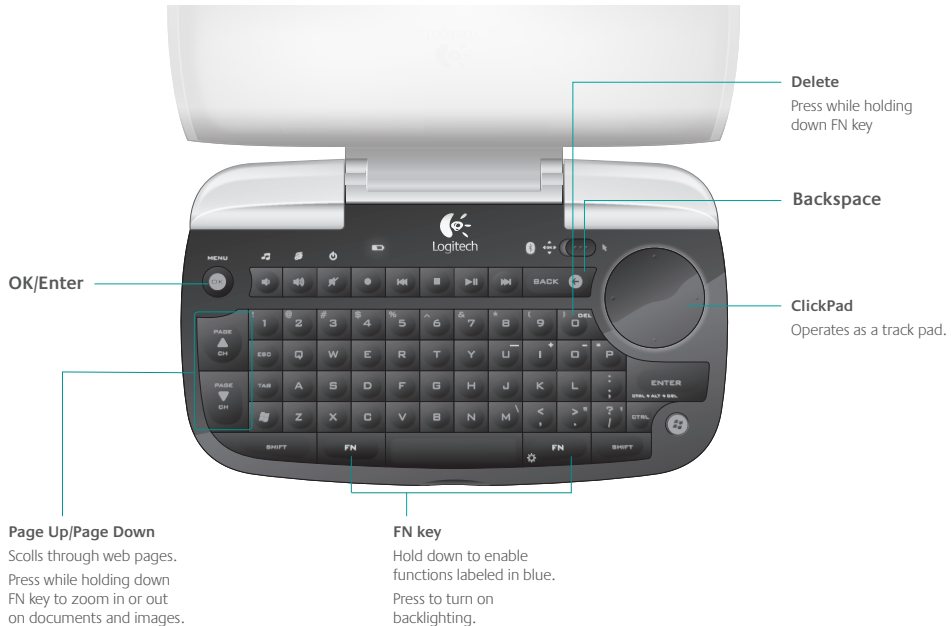
Confirms selected item

#### PS button

Displays the Home menu

## Using diNovo Mini with PLAYSTATION®3

### Controls in cursor mode



## Using diNovo Mini with PLAYSTATION®3

### Illumination

Backlighting makes your diNovo Mini easy to use—even in a darkened room. The keyboard and ClickPad illuminate when you use them, and dim to conserve power when they're not being used.

Color coding identifies the current mode and provides quick access to controls.

The keyboard and ClickPad automatically illuminate when you do any of the following:

- Open the cover
- Touch the ClickPad
- Press any key

Backlighting fades when you either close the cover of your diNovo Mini or stop using the keys and ClickPad for about five seconds.

**Note:** The diNovo Mini uses an ambient light sensor to measure current light levels. If the available light is sufficient for viewing the keyboard and controls, the diNovo Mini suppresses backlighting to conserve power.

## Using diNovo Mini with PLAYSTATION®3

### ClickPad backlighting

In media remote mode, the ClickPad direction arrows and OK in the center of the pad are backlit in green, indicating that the pad is functioning as a D-pad for navigating media.

In cursor mode, the perimeter of the ClickPad is backlit in orange to indicate that it's functioning as a touch pad for moving the cursor.

### Keyboard backlighting

Keyboard keys are always backlit in orange.

ClickPad in media  
remote mode



ClickPad in  
cursor mode





## Tips and troubleshooting

If a problem should occur, you can usually solve it quickly in one of the following ways:

- Check the position of the platform switch and confirm that it's set for PLAYSTATION®3 (page 7).
- Restart the diNovo Mini by removing and reinserting the lithium-ion battery (page 8).
- Recharge the diNovo Mini (page 9).
- Re-connect your diNovo Mini to the PLAYSTATION®3 (page 9)
- Restart your PLAYSTATION®3.

## Service and support

### **General support**

For service and discussion forums,  
visit [www.logitech.com/support](http://www.logitech.com/support)

### **Software downloads**

Visit [www.logitech.com/downloads](http://www.logitech.com/downloads)

### **Registering your diNovo Mini**

Visit [www.logitech.com/register](http://www.logitech.com/register)

# Service and support

## Technical support



Location	Hotline Technical Help
België / Belgique	Dutch: +32-(0)2 200 64 44; French: +32-(0)2 200 64 40
Česká Republika	+420 239 000 335
Danmark	+45-38 32 31 20
Deutschland	+49-(0)69-51 709 427
España	+34 -91-275 45 88
France	+33-(0)1-57 32 32 71
Ireland	+312-(0) 200 8433
Italia	+39-02-91 48 30 31
Magyarország	+36-177-74 853
Nederland	+31-(0)-20-200 84 33
Norge	+47-(0)24 159 579
Österreich	+43-(0)1 206 091 026
Polska	+48-22-854 11 51
Portugal	+351-21-415 90 16
Russija	+7(495) 641 34 60
Schweiz / Suisse Svizzera	D +41-(0)22 761 40 12; F +41-(0)22 761 40 16; I +41-(0)22 761 40 20; E +41 (0)22 761 40 25
South Africa	0800 981 089
Suomi	+358-(0)9 725 191 08
Sverige	+46-(0)8-501 632 83
Türkiye	Check website
United Arab Emirates	800 441-4294
United Kingdom	+44-(0)203-024-81 59
European, Mid. East., & African Hq. Romanel s/Morges, Switzerland	English: +41-(0)22 761 40 25 Fax: +41-(0)21 863 54 02
Eastern Europe	English: 41-(0)22 761 40 25



Location	Hotline Technical Help
United States	+1 646-454-3200
Argentina	0800 555 3284
Brasil	0800 891 4173
Canada	+1 416 207 2782
Chile	1230 020 5484
Latin America	+55 11 3444 6761
Mexico	001 800 578 9619

## Compliance and FCC statement

**Important ergonomic information.** Long periods of repetitive motion using an improperly set-up workspace, incorrect body position, and poor work habits may be associated with physical discomfort and injury to nerves, tendons, and muscles. If you feel pain, numbness, weakness, swelling, burning, cramping, or stiffness in your hands, wrists, arms, shoulders, neck, or back, see a qualified health professional. For more information, please read the Comfort Guidelines located on the Logitech® web site at <http://www.logitech.com/comfort>, or on the Logitech® Software CD.

**Power supply warning.** The power supply for this product is for indoor use only. Use the power supply that comes with your product; do not use any other power supply. Do not use a damaged power supply or attempt to repair one that is damaged. Do not immerse the power supply in water or subject it to physical abuse. Inspect the power supply regularly for damage to its cable, plug, and body.

**Battery warning.** Your product uses a rechargeable lithium-ion battery. Use this battery and no other. Exercise care when handling the battery. Do not open or mutilate it. When a battery is misused, it may leak or explode causing burns and personal injury. Conducting materials can also short out a battery causing it to overheat and leak. Do not put the battery in a fire, expose it to heat above 130 F (54 C), or immerse it in water. If the battery leaks or it will not recharge, use caution and discard the battery immediately according to your local laws. Battery charge may vary depending on usage. When not using your product for long periods of time, remove the battery and store it in a cool, dry place at normal room temperature.

**Compliance on the Web.** For additional compliance information, go to <http://www.logitech.com/compliance>.

## Compliance and FCC statement

### **FCC statement.** FCC Compliance and Advisory Statement:

This hardware device complies with Part 15 of the FCC Rules. Operation is subject to the following two conditions:

1) this device may not cause harmful interference, and 2) this device must accept any interference received, including interference that may cause undesired operation.

This equipment has been tested and found to comply with the limits for a Class B digital device, pursuant to Part 15 of the FCC Rules. These limits are designed to provide reasonable protection against harmful interference in a residential installation. This equipment generates, uses, and can radiate radio frequency energy and, if not installed or used in accordance with the instructions, may cause harmful interference to radio communications. However, there is no guarantee that interference will not occur in a particular installation. If this equipment does cause harmful interference to radio or television reception, which can be determined by turning the equipment off and on, the user is encouraged to try to correct the interference by one or more of the following measures:

1) reorient or relocate the receiving antenna; 2) increase the separation between the equipment and the receiver; 3) connect the equipment to an outlet on a circuit different from that to which the receiver is connected;

4) consult the dealer or an experienced radio/TV technician for help. Any changes or modifications not expressly approved by the party responsible for compliance could void the user's authority to operate the equipment. Where shielded interface cables have been provided with the product or specified additional components or accessories elsewhere defined to be used with the installation of the product, they must be used in order to ensure compliance with FCC regulations.

**Canadian Doc Statement:** This digital device does not exceed the Class B limits for radio noise emissions from digital apparatus specified in the interference-causing equipment standard entitled "Digital Apparatus," ICES-003 of the Department of Communications. This device complies with RSS-210 of Industry and Science Canada. Operation is subject to the following two conditions: 1) this device may not cause interference, and 2) this device must accept any interference, including interference that may cause undesired operation of the device.

# Logitech Hardware Product Limited Warranty

Logitech warrants that your Logitech hardware product shall be free from defects in material and workmanship for three (3) years, beginning from the date of purchase. Except where prohibited by applicable law, this warranty is nontransferable and is limited to the original purchaser. This warranty gives you specific legal rights, and you may also have other rights that vary under local laws.

## Remedies

Logitech's entire liability and your exclusive remedy for any breach of warranty shall be, at Logitech's option, (1) to repair or replace the hardware, or (2) to refund the price paid, provided that the hardware is returned to the point of purchase or such other place as Logitech may direct with a copy of the sales receipt or dated itemized receipt. Shipping and handling charges may apply except where prohibited by applicable law. Logitech may, at its option, use new or refurbished or used parts in good working condition to repair or replace any hardware product. Any replacement hardware product will be warranted for the remainder of the original warranty period or thirty (30) days, whichever is longer or for any additional period of time that may be applicable in your jurisdiction.

This warranty does not cover problems or damage resulting from (1) accident, abuse, misapplication, or any unauthorized repair, modification or disassembly; (2) improper operation or maintenance, usage not in accordance with product instructions or connection to improper voltage supply; or (3) use of consumables, such as replacement batteries, not supplied by Logitech except where such restriction is prohibited by applicable law.

## How to Obtain Warranty Support

Before submitting a warranty claim, we recommend you visit the support section at [www.logitech.com](http://www.logitech.com) for technical assistance. Valid warranty claims are generally processed through the point of purchase during the first thirty (30) days after purchase; however, this period of time may vary depending on where you purchased your product – please check with Logitech or the retailer where you purchased your product for details. Warranty claims that cannot be processed through the point of purchase and any other product related questions should be addressed directly to Logitech. The addresses and customer service contact information for Logitech can be found in the documentation accompanying your product and on the web at [www.logitech.com/contactus](http://www.logitech.com/contactus).

## Limitation of Liability

LOGITECH SHALL NOT BE LIABLE FOR ANY SPECIAL, INDIRECT, INCIDENTAL OR CONSEQUENTIAL DAMAGES WHATSOEVER, INCLUDING BUT NOT LIMITED TO LOSS OF PROFITS, REVENUE OR DATA (WHETHER DIRECT OR INDIRECT) OR COMMERCIAL LOSS FOR BREACH OF ANY EXPRESS OR IMPLIED WARRANTY ON YOUR PRODUCT EVEN IF LOGITECH HAS BEEN ADVISED OF THE POSSIBILITY OF SUCH DAMAGES. Some jurisdictions do not allow the exclusion or limitation of special, indirect, incidental or consequential damages, so the above limitation or exclusion may not apply to you.

## Duration of Implied Warranties

EXCEPT TO THE EXTENT PROHIBITED BY APPLICABLE LAW, ANY IMPLIED WARRANTY OR CONDITION OF MERCHANTABILITY OR FITNESS FOR A PARTICULAR PURPOSE ON THIS HARDWARE PRODUCT IS LIMITED IN DURATION TO THE DURATION OF THE APPLICABLE LIMITED WARRANTY PERIOD FOR YOUR PRODUCT. Some jurisdictions do not allow limitations on how long an implied warranty lasts, so the above limitation may not apply to you.

## National Statutory Rights

Consumers have legal rights under applicable national legislation governing the sale of consumer goods. Such rights are not affected by the warranties in this Limited Warranty.

## No Other Warranties

No Logitech dealer, agent, or employee is authorized to make any modification, extension, or addition to this warranty.

## Logitech Address

Logitech, Inc., 6505 Kaiser Drive, Fremont, California 94555, U.S.A.  
Logitech Europe S.A., Z.I. Moulin du Choc D, 1122 Romanel/Morges, Switzerland

© 2008 Logitech. All rights reserved. Logitech, the Logitech logo, and other Logitech marks are owned by Logitech and may be registered. All other trademarks are the property of their respective owners. Logitech assumes no responsibility for any errors that may appear in any manual or on this website. Information contained herein is subject to change without notice.

