



Installing PSP 300x

Motherboard

Written By: mbnewsom



TOOLS:

- [Phillips 00 Screwdriver \(1\)](#)
- [Spudger \(1\)](#)



PARTS:

- [Sony PSP 300x TA-090 Motherboard \(1\)](#)

SUMMARY

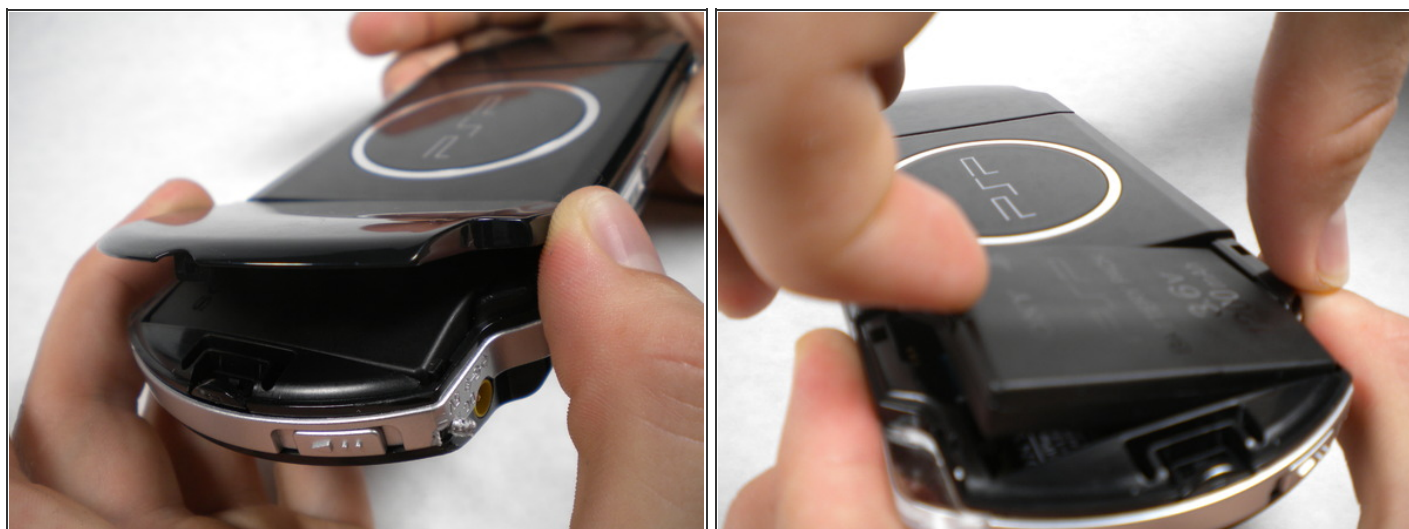
Steps for removing the motherboard of a Sony PSP-3000

Step 1 — Battery



- Start on the back of the device. This is where the battery and the battery cover are located.

Step 2



- The battery door is located on the left side when looking at the PSP from the back. Lift open the battery door to reveal the battery. Remove the battery cover.
- Using your finger, pry up the top edge of the battery. Continue to pull the top edge until the bottom of the battery is free.
- Remove the battery.

Step 3 — Casing



- Using a spudger or fingernail, peel back the warranty sticker that is behind the battery.

Step 4



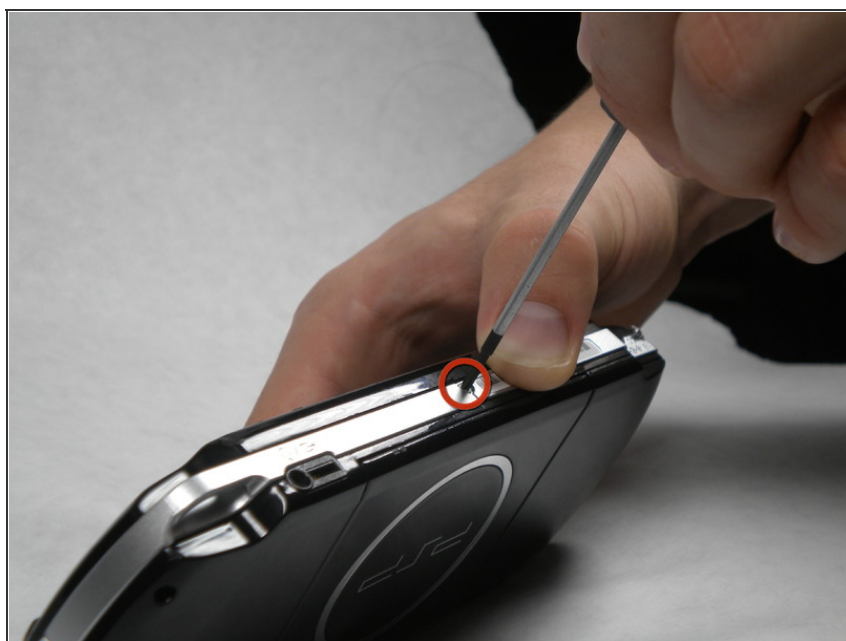
- Unscrew all four screws from the back of the PSP.
 - Two from behind the battery.
 - Two on the right side of the PSP.

Step 5



- Unscrew two screws from the top of the PSP.

Step 6



- Remove the single screw from the bottom surface of the PSP.


Step 7



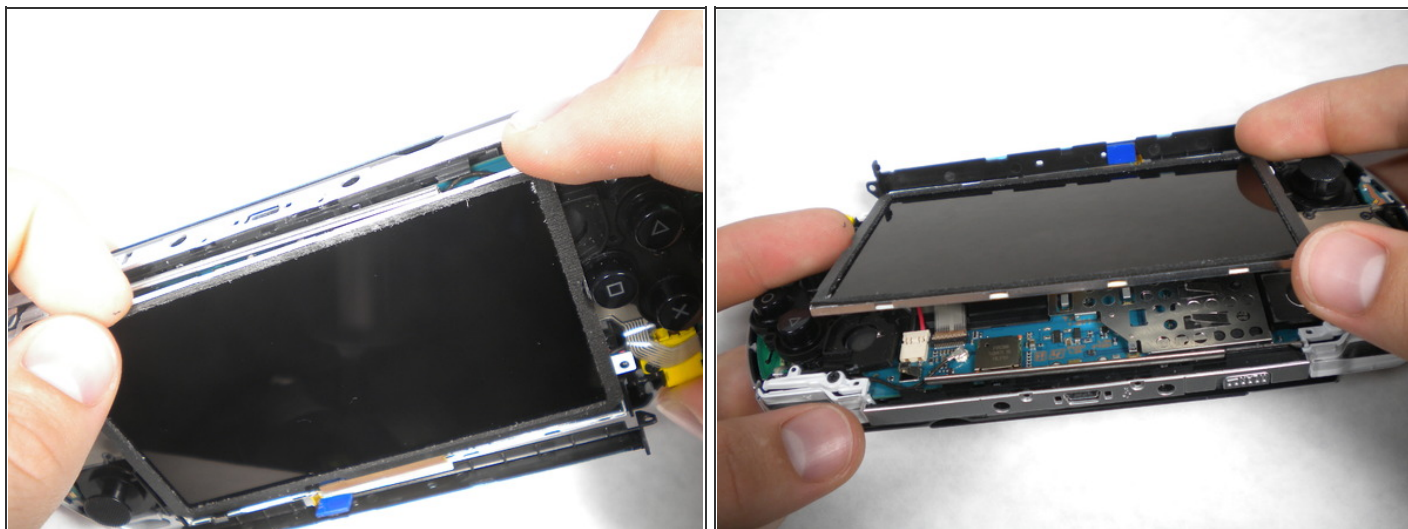
- Starting from the 'R' shoulder button, slide the spudger in between the outer casing of the PSP, and gently pry off the casing.
- Remove the front casing completely.

Step 8 — LCD Screen



- Push the homebar to the right to release the tab on the right side of the LCD screen.
- DO NOT completely remove the homebar, as it is still connected by ribbon cables. 

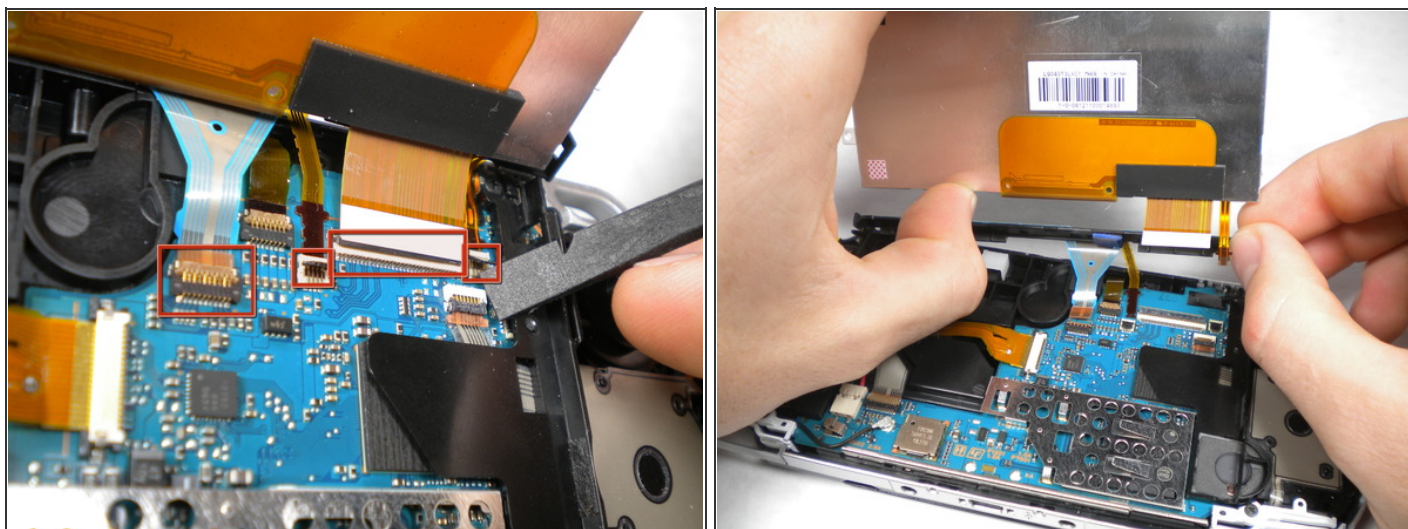
Step 9



- Slowly begin to lift the LCD screen off the PSP from the top edge.
- Again, the LCD screen is attached by ribbon cables, so do not remove it completely.
 - Orientation of PSP flipped in photo



Step 10



- Using a spudger or fingernail, flip the small brown locks on the four ribbon cable connectors up.
- Pull all four ribbon cables out, and remove the LCD screen and homebar from the PSP.

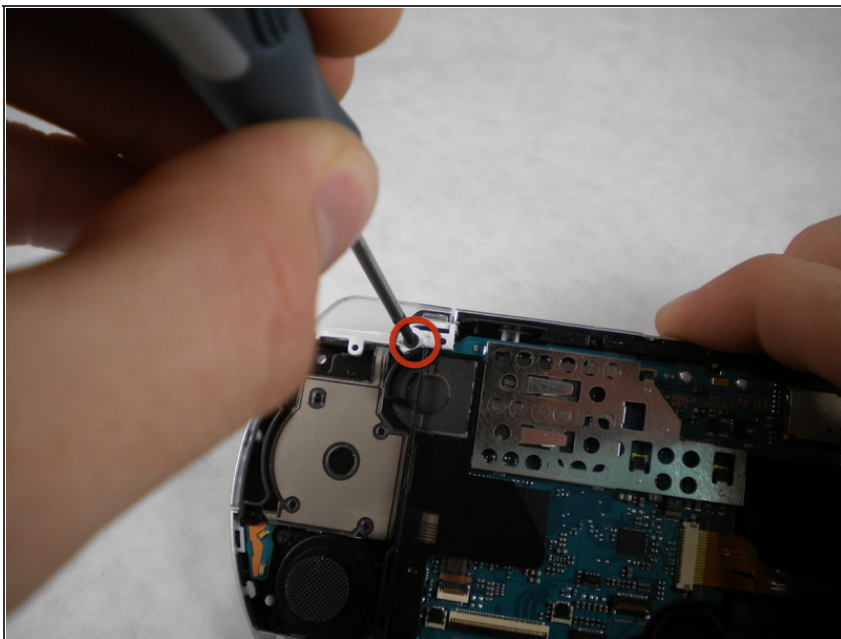
Step 11



- Remove the metal tab that lies above the LCD.
- Upon reassembly, make note that the stamped lettering faces down, and the large tab fits just above the motherboard to the right of the left trigger.

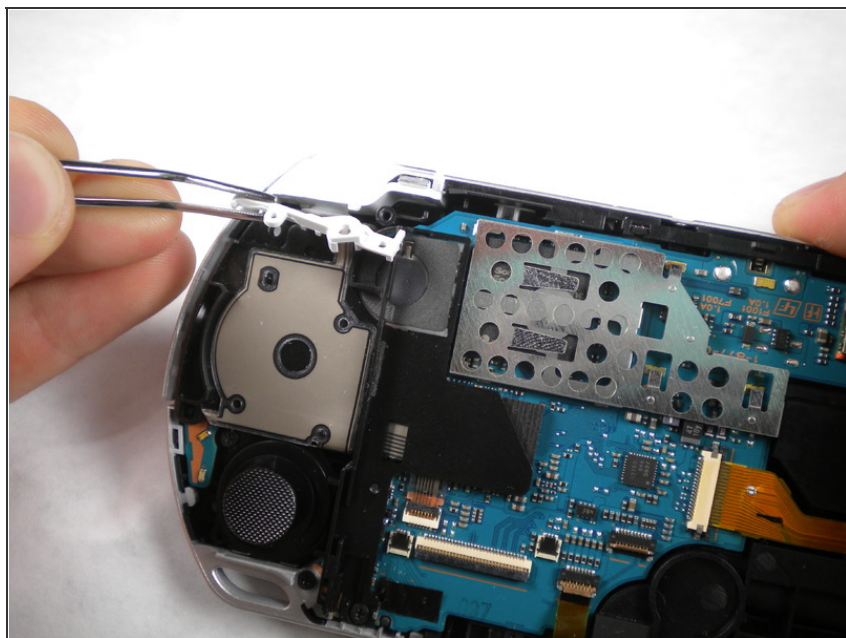


Step 12 — Trigger Buttons



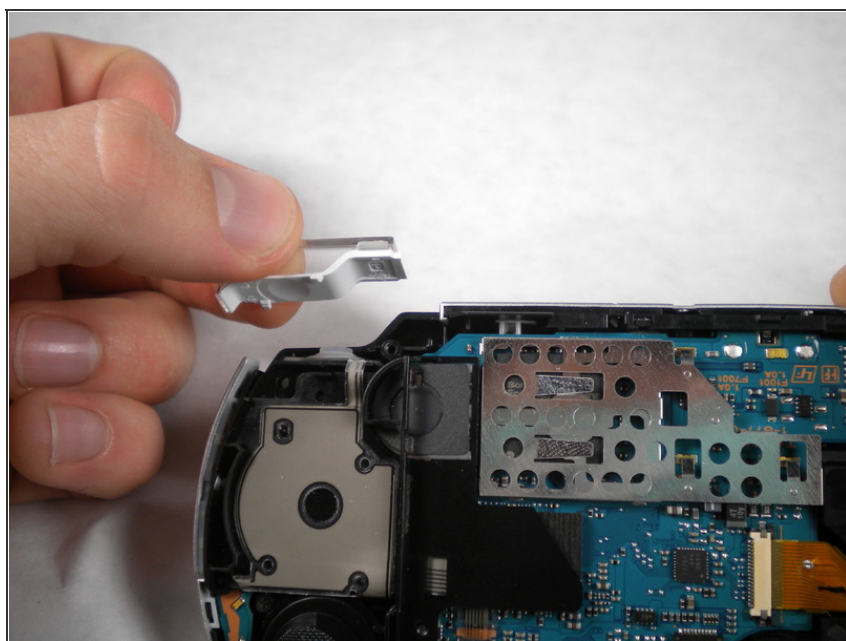
- Remove the screw securing 'L' trigger to the PSP.

Step 13



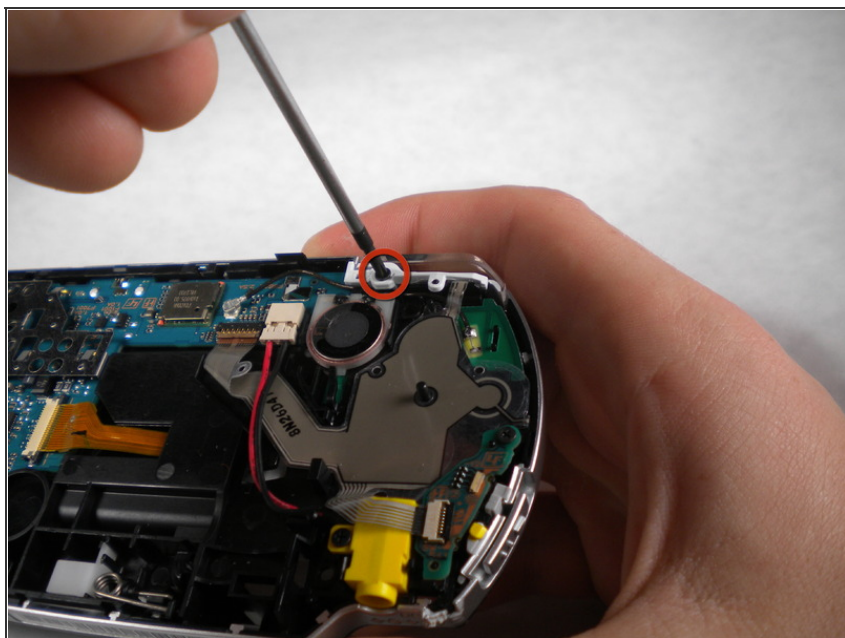
- Remove the white plastic piece that holds the 'L' trigger in place.

Step 14



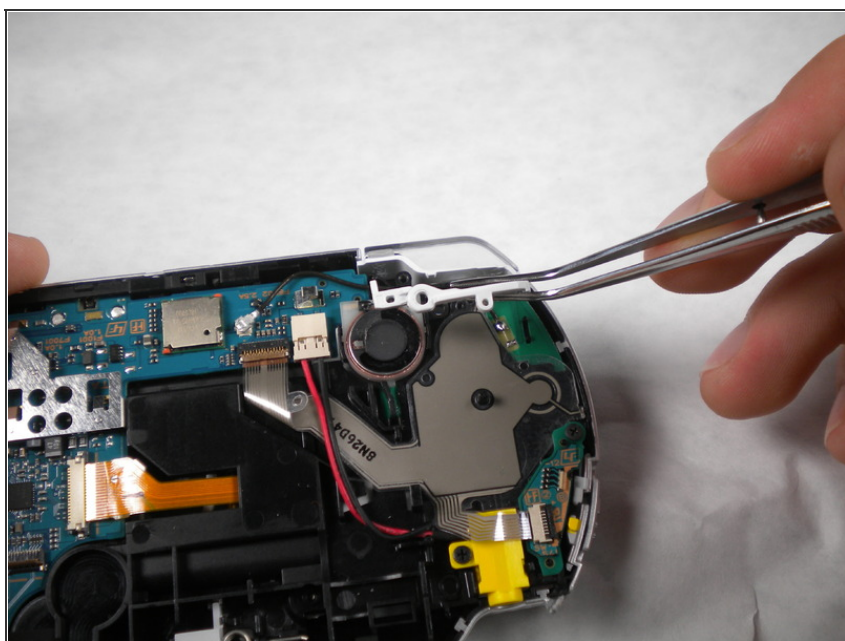
- Remove the 'L' trigger from the PSP.

Step 15



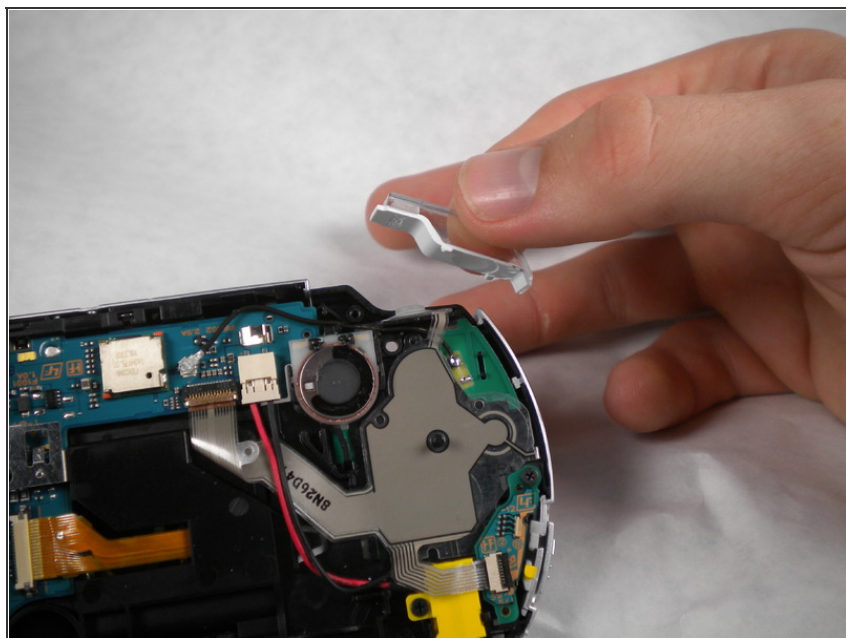
- Remove the screw securing 'R' trigger.

Step 16



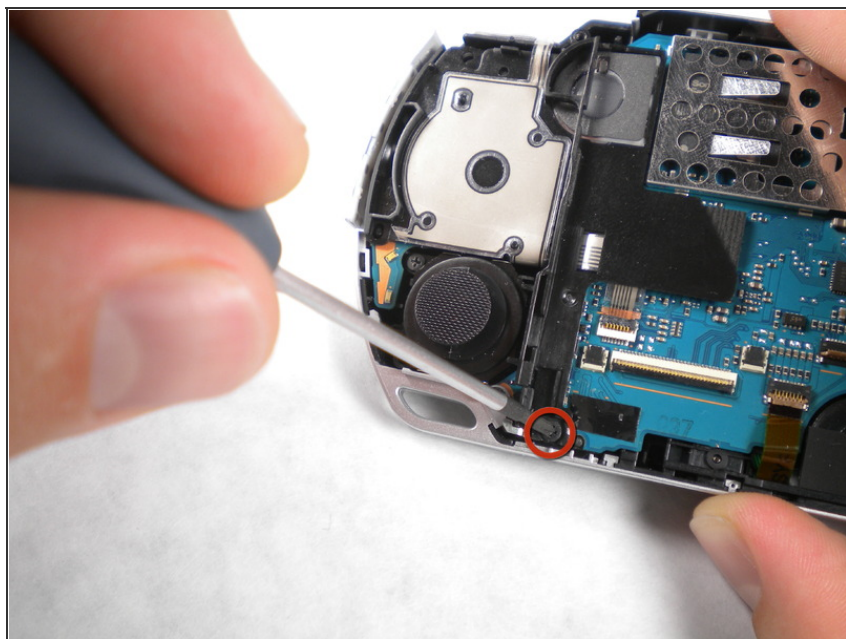
- Remove the white plastic piece that holds the 'R' trigger in place.

Step 17



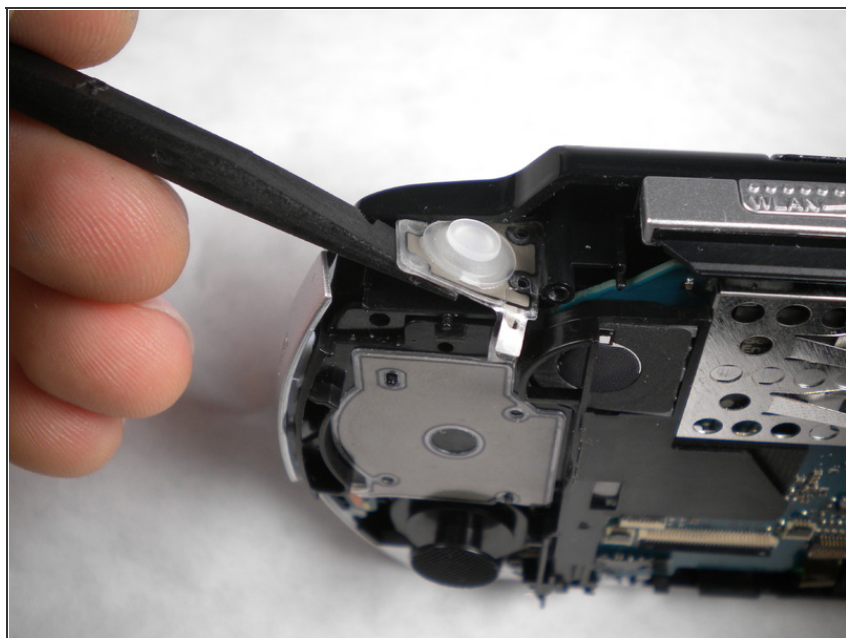
- Remove the 'R' trigger from the PSP.

Step 18 — Analog Stick



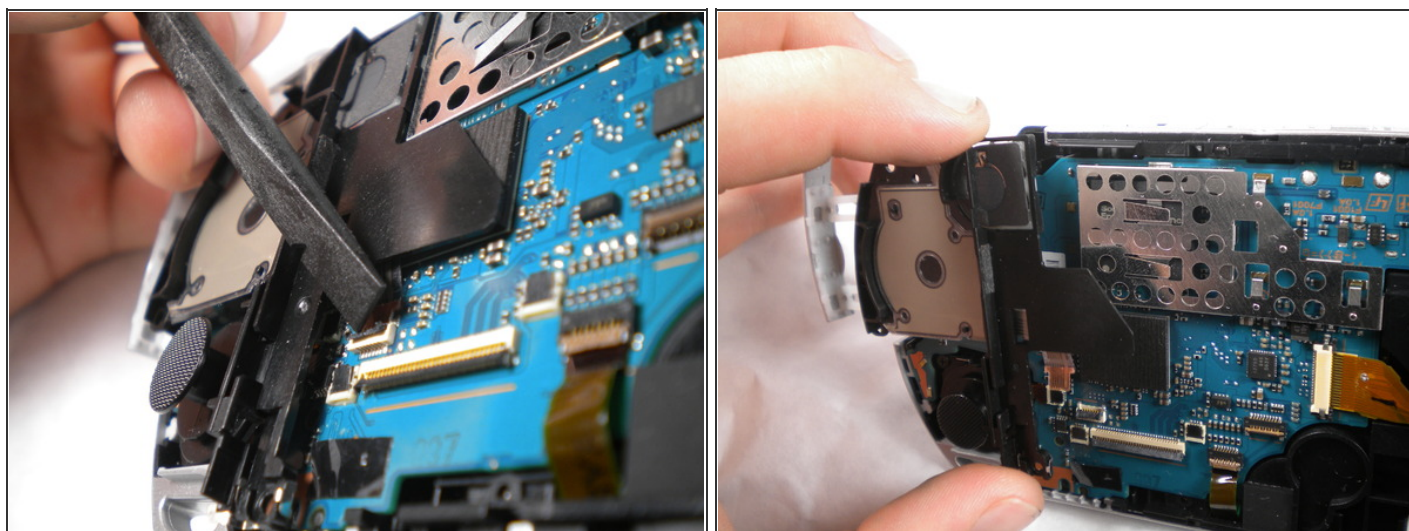
- Remove the screw from the bottom left edge of the PSP.

Step 19



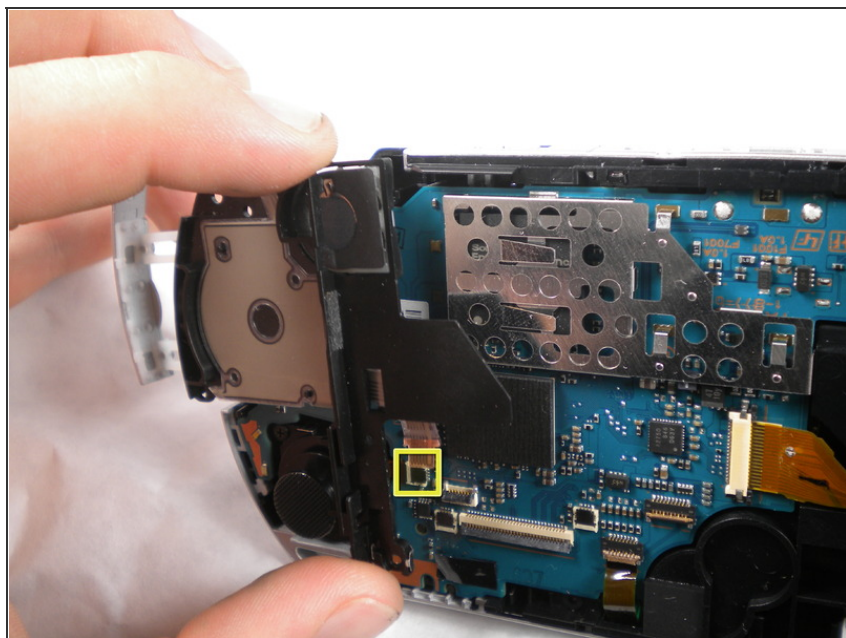
- Being careful not to break the ribbon cable, use the spudger to peel the adhesive button of the the 'L' trigger off the PSP.

Step 20



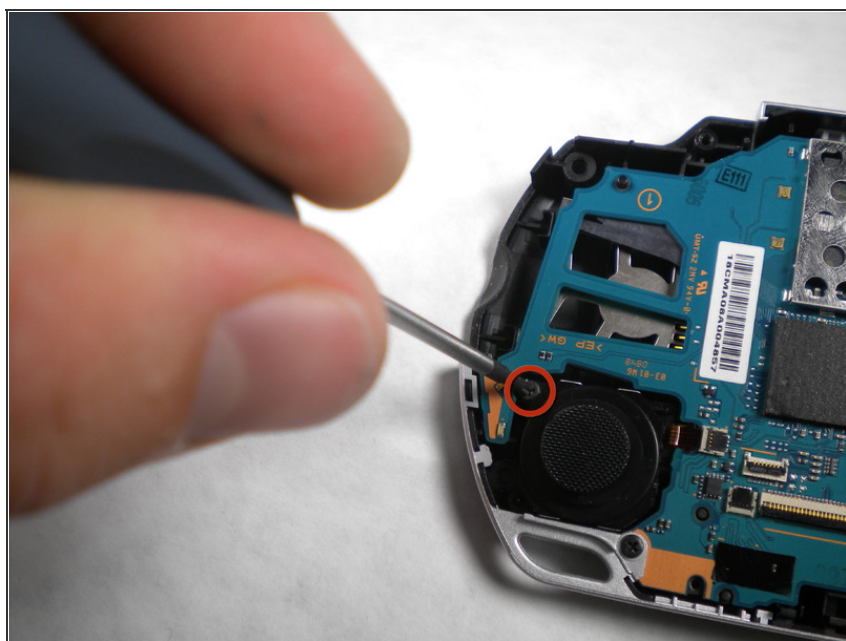
- Using a fingernail or spudger, flip up the retaining bracket on the d-pad and 'L' trigger ribbon cable.
- Lift the black plastic bracket along with the d-pad contact pad, disconnecting the ribbon cable as you lift.

Step 21



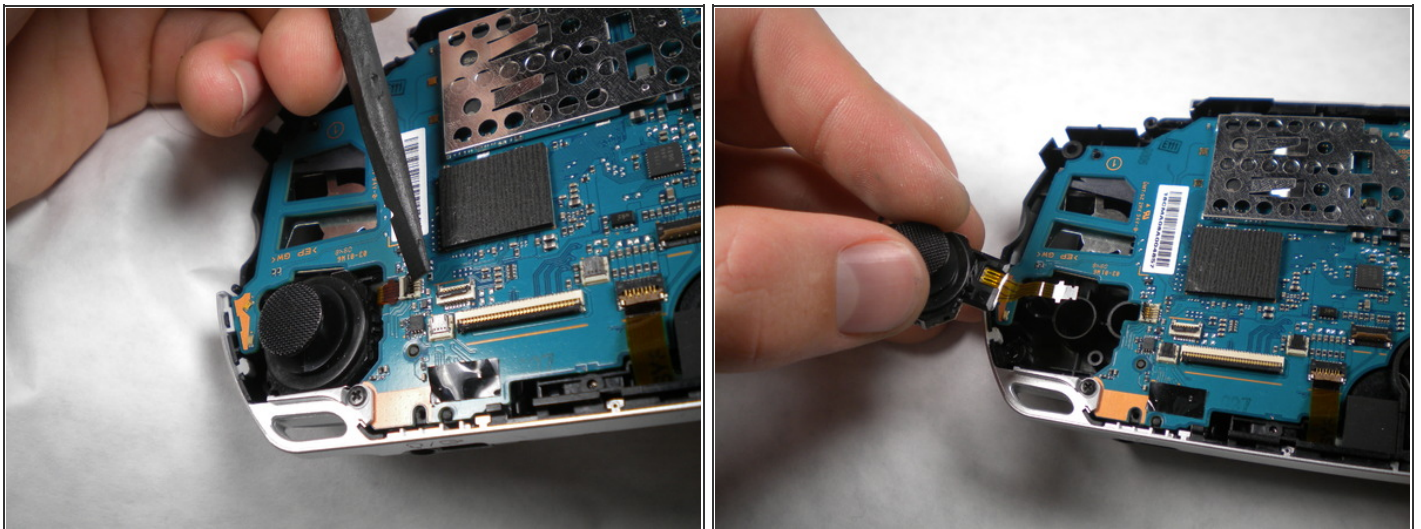
- Remove the cable from the connector and remove the entire black piece from the PSP.

Step 22



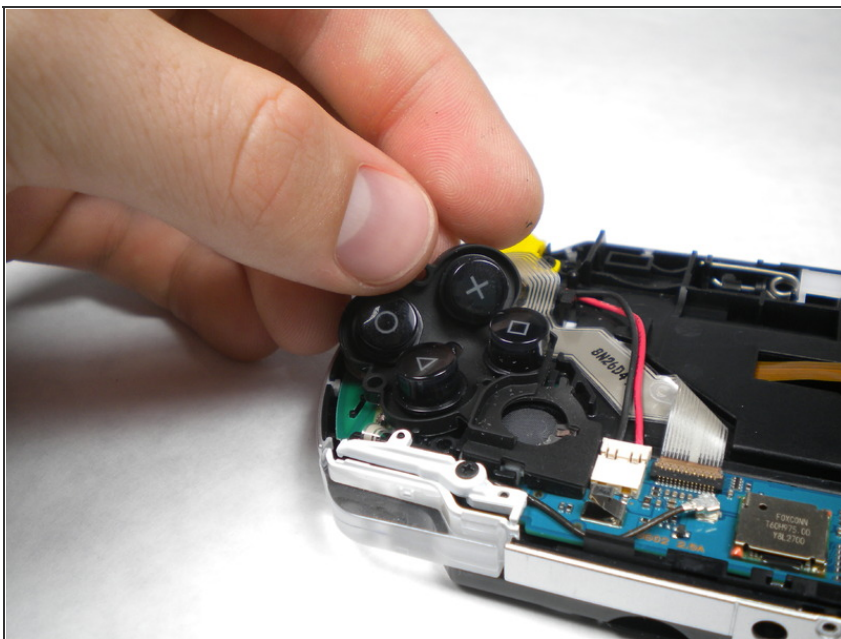
- Remove the screw holding the analog stick in place.

Step 23



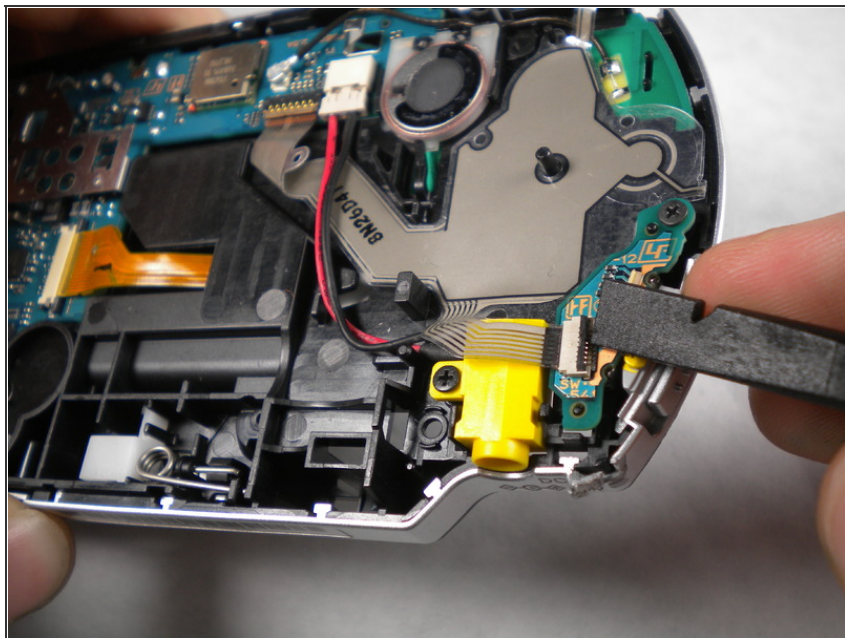
- Flip up the lock on the analog sticks ribbon cable.
- Remove the analog stick from the PSP.

Step 24 — Button Pad



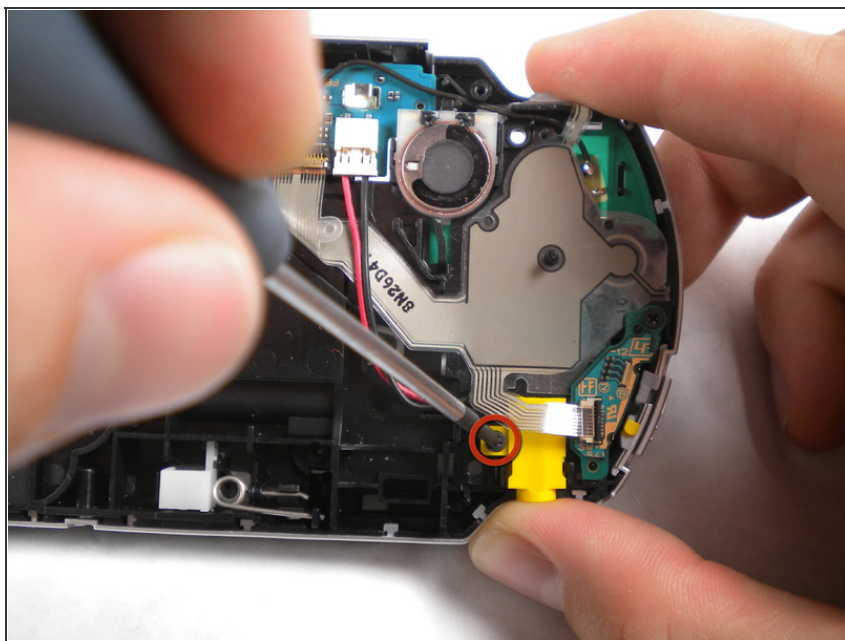
- After removing the LCD Screen, the Button Pad should be easily removable.

Step 25 — Power Jack



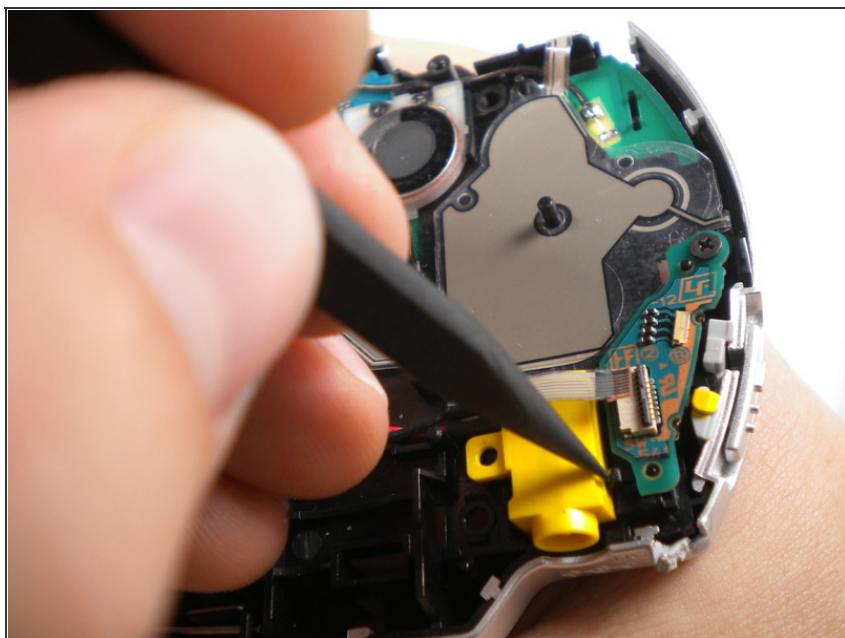
- Flip up the lock and detach the ribbon cable above the power jack.

Step 26



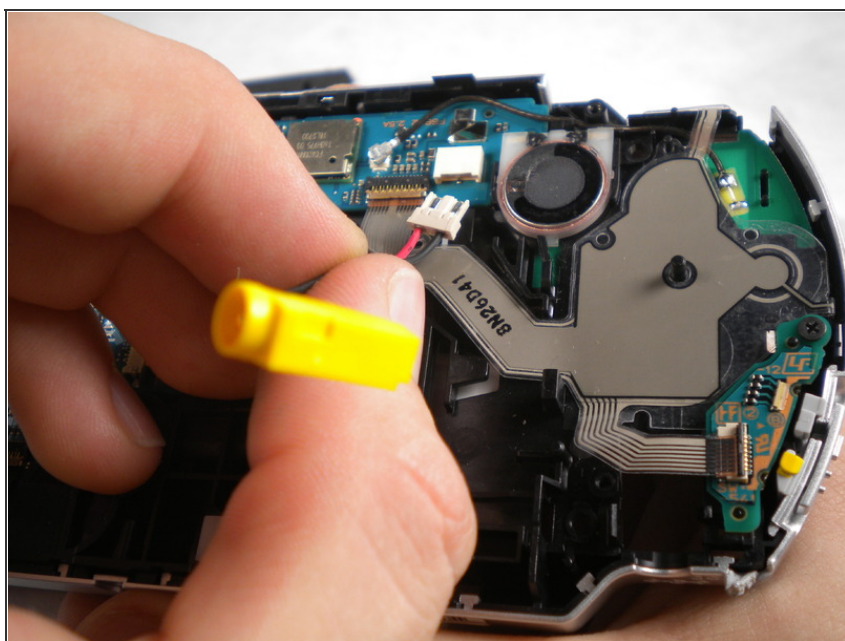
- Remove the screw from the power jack.

Step 27



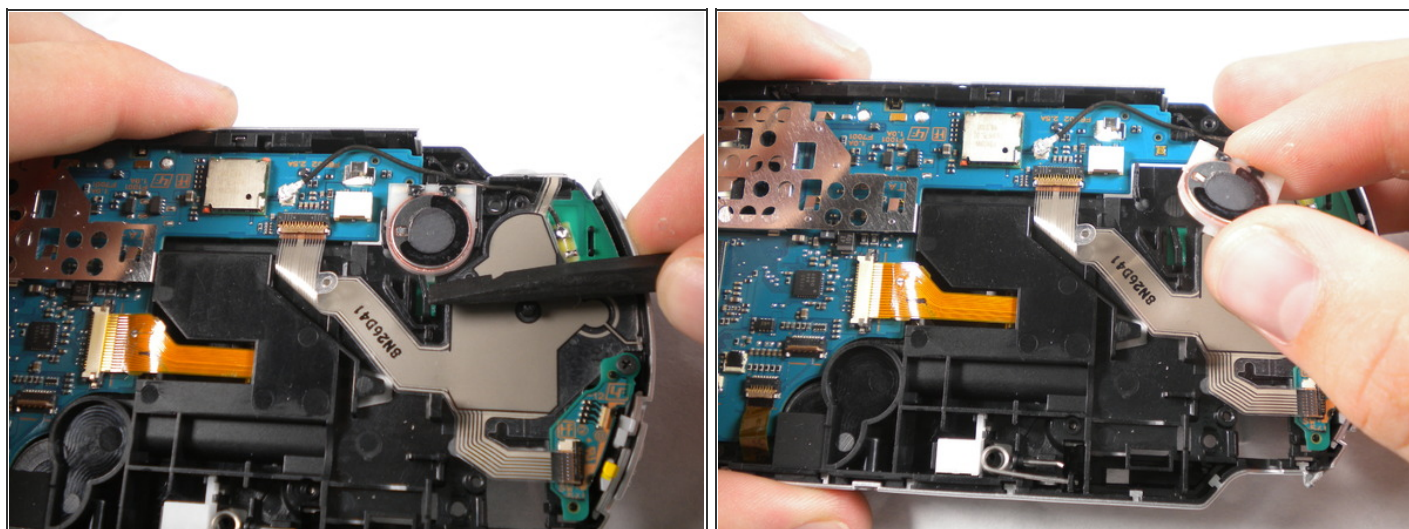
- Carefully bend back the black tab holding the power jack in place and start pulling the jack up to release it from this clip.

Step 28



- Pull the plug connecting the power jack to the motherboard.
- Remove the power jack.

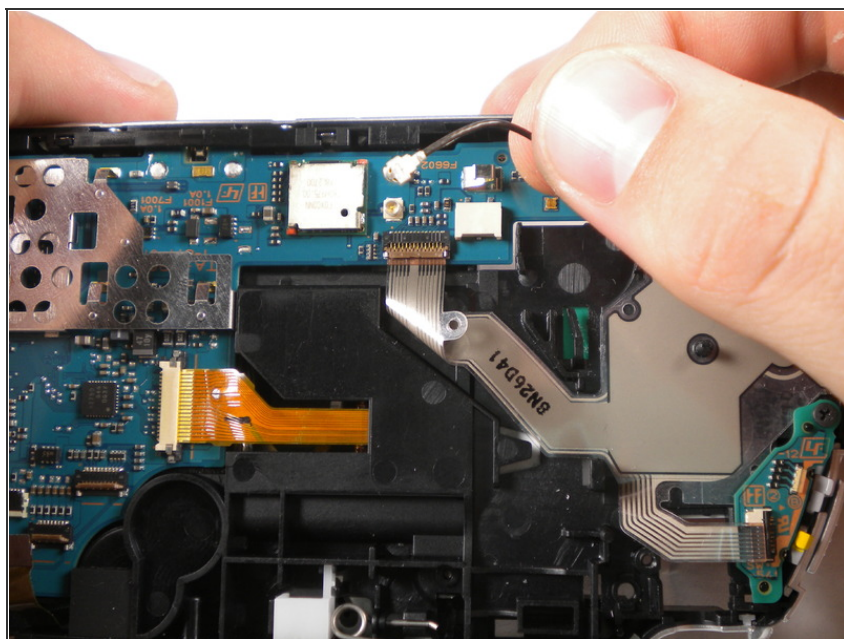
Step 29 — Speaker



- The speaker is spring loaded, and has a tendency to pop out and do a few back-flips in air when you push the tab. It's pretty entertaining, but be careful not to lose or damage it.
- Push the black tab at the bottom of the speaker over.
- The speaker should pop out of place, and you should be able to remove it easily.

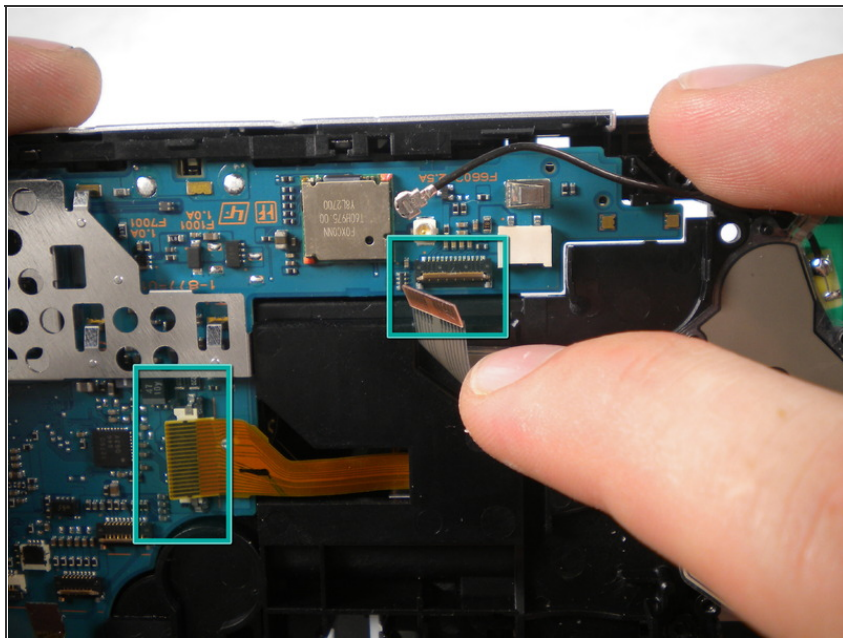


Step 30 — Motherboard



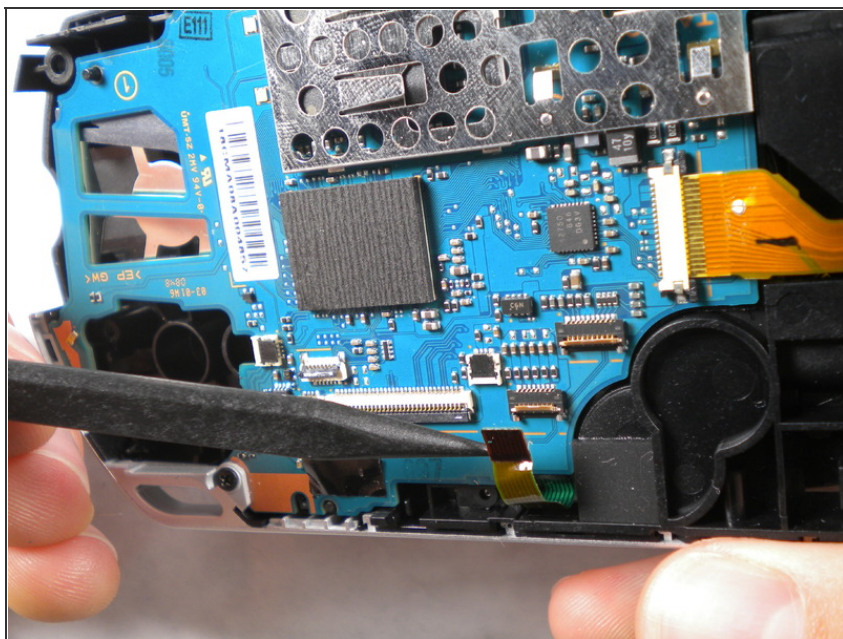
- Unplug the wireless cable.

Step 31



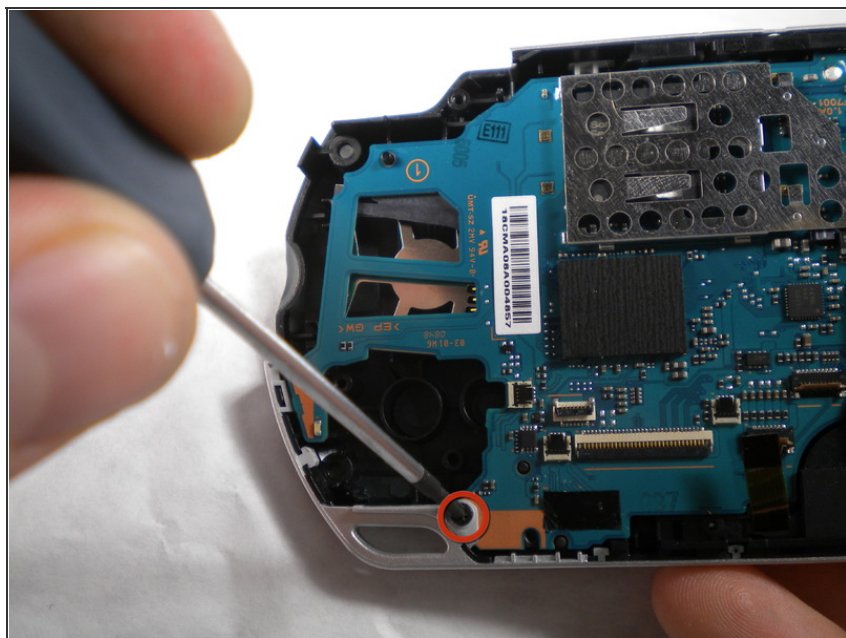
- Flip up the locks and remove the two ribbon cables shown.

Step 32



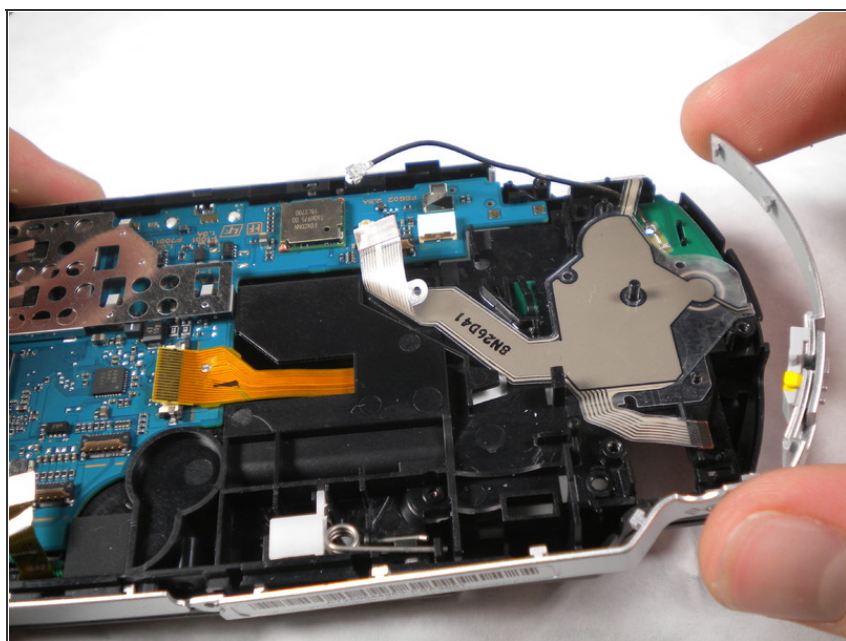
- Flip up the lock and remove one last ribbon cable from the bottom edge of the PSP.

Step 33



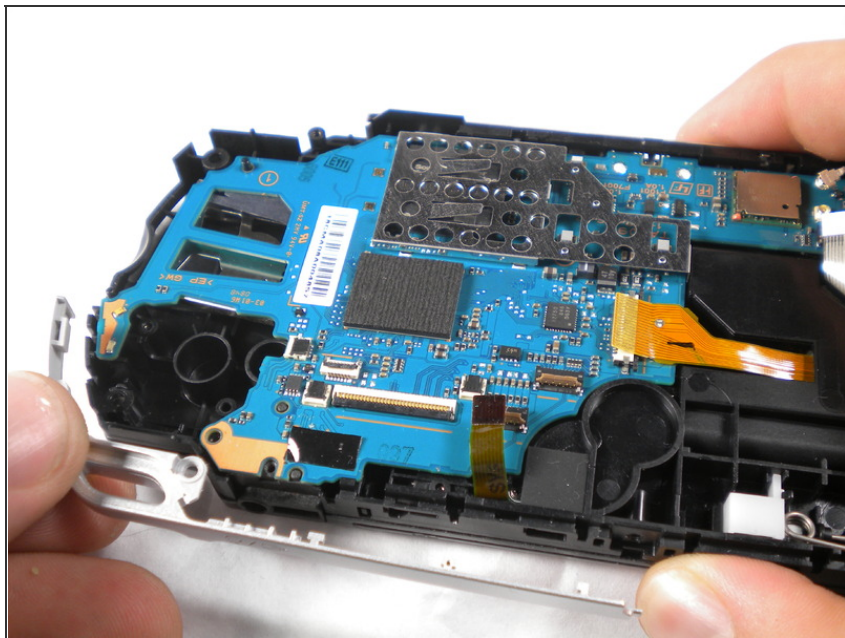
- Remove the screw from the bottom left corner of the PSP.

Step 34



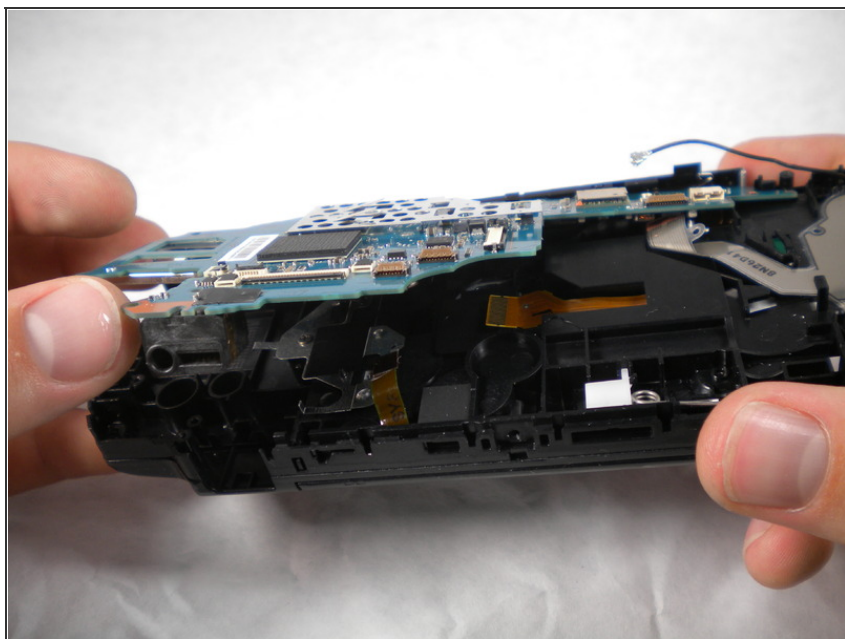
- Lift the silver rim on the right side of the PSP up and off.

Step 35



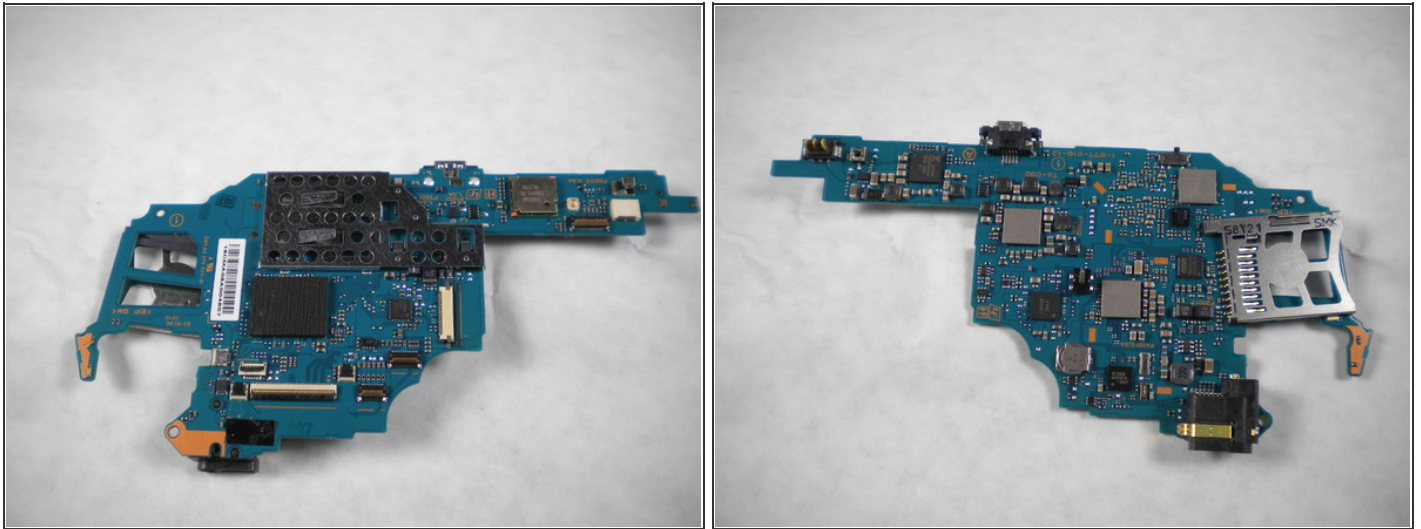
- Lift the silver rim on the left side of the PSP up and off.

Step 36



- Lift the motherboard up slowly starting from the bottom of the PSP, being careful not to damage the port on top.

Step 37



- Pull the motherboard out and remove it from the PSP.
-

To reassemble your device, follow these instructions in reverse order.

This document was last generated on 2012-11-01 12:52:18 AM.