



# Installing PlayStation Vita Motherboard

Written By: Brittany McCrigler



## TOOLS:

- [Phillips 00 Screwdriver \(1\)](#)
- [Plastic Opening Tools \(1\)](#)
- [Spudger \(1\)](#)
- [Tweezers \(1\)](#)

## SUMMARY

This guide takes you through the process of installing the motherboard.

## Step 1 — Case Separation



- Using a Phillips #00 screwdriver, remove the four 6.4mm screws on the back casing.

## Step 2



- Using your fingernail or a spudger, pry open the accessory port cover on the bottom of the device.
- Using a Phillips #00 screwdriver, remove the two 5.4mm screws hidden beneath the accessory port cover.

### Step 3



- Remove the two 5.4mm Phillips #00 screws on the top of the device near the charging port.

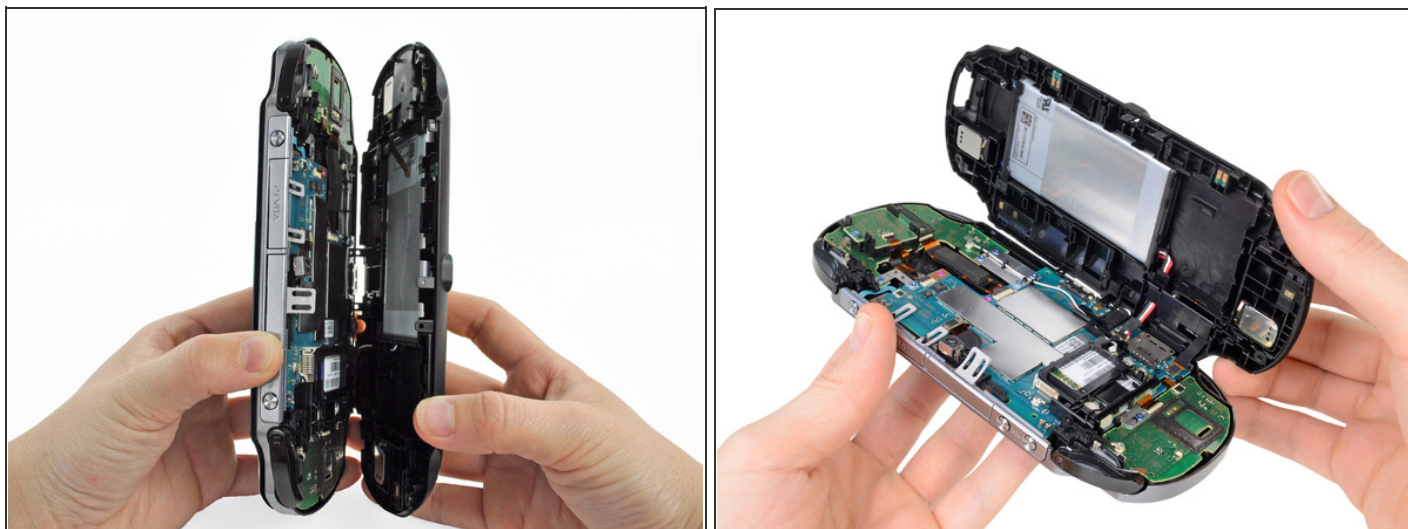
### Step 4



- Beginning at the sides of the device, use a plastic opening tool to separate the front and rear cases.
- Continue working your way around the device gently prying it open.
- There are still wires holding the front and rear cases together. You may damage the connections if you yank the cases completely apart.

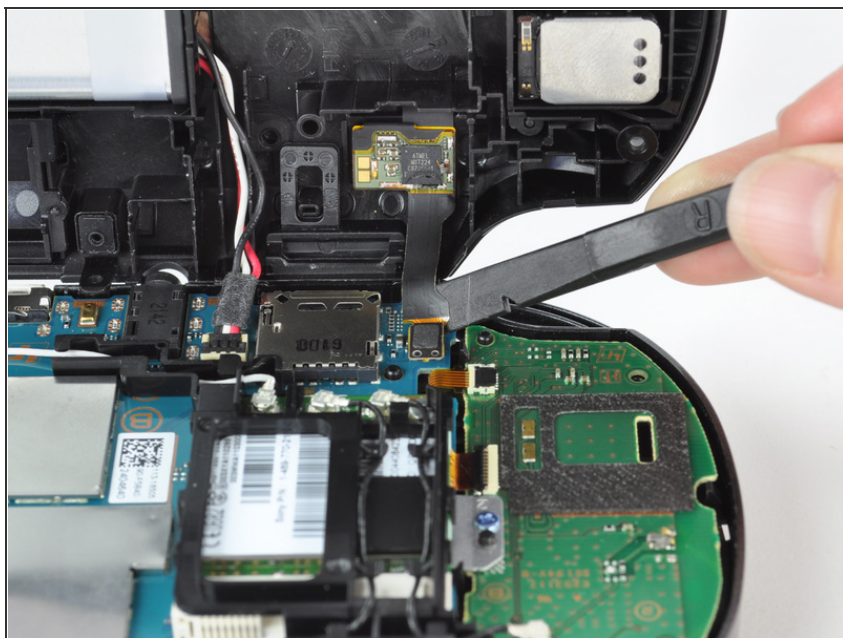


## Step 5



- Gently separate the two cases, minding the battery and the touch screen controller connectors holding the two cases together.

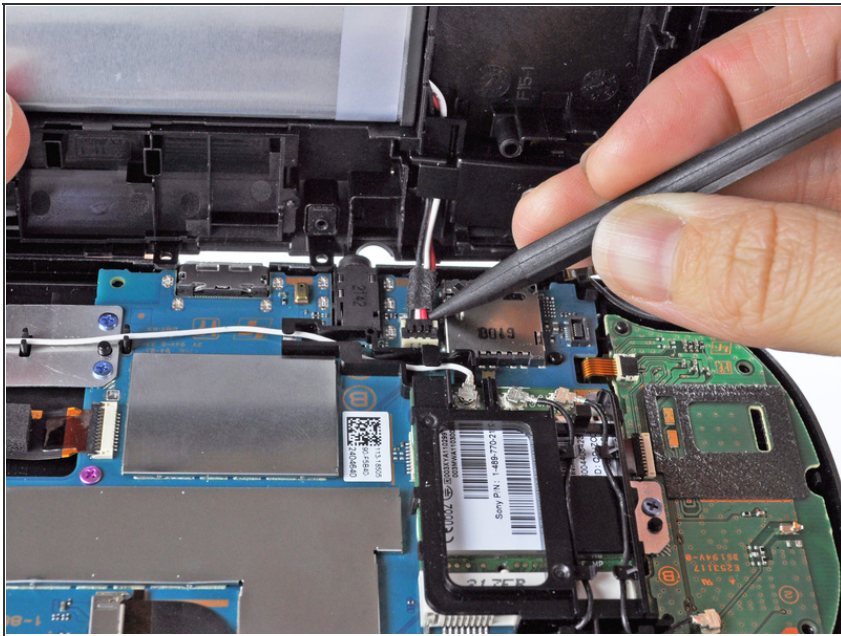
## Step 6



- Using a spudger, free the touch screen controller flex cable by gently prying up the connection.



## Step 7



- Free the battery cable by gently prying up on the connection with a spudger.

## Step 8



- Separate the front and rear cases.

## Step 9 — Wireless Card



- Using the pointy end of the spudger, disconnect the three antenna cable connectors on top of the wireless card.
- Deroute the antenna cables so that they are out of the wireless card casing. Rest the wires out of the way.

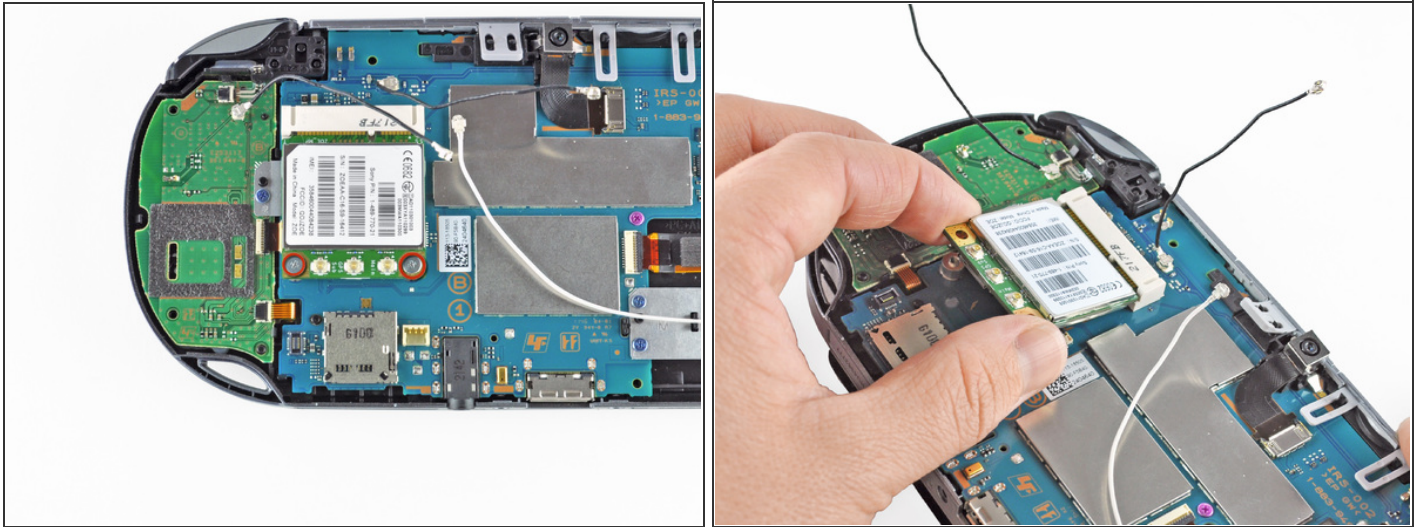
## Step 10



- Hook the spudger beneath the tab on the wireless card casing and release the tab.
- Peel up and remove the wireless card casing.



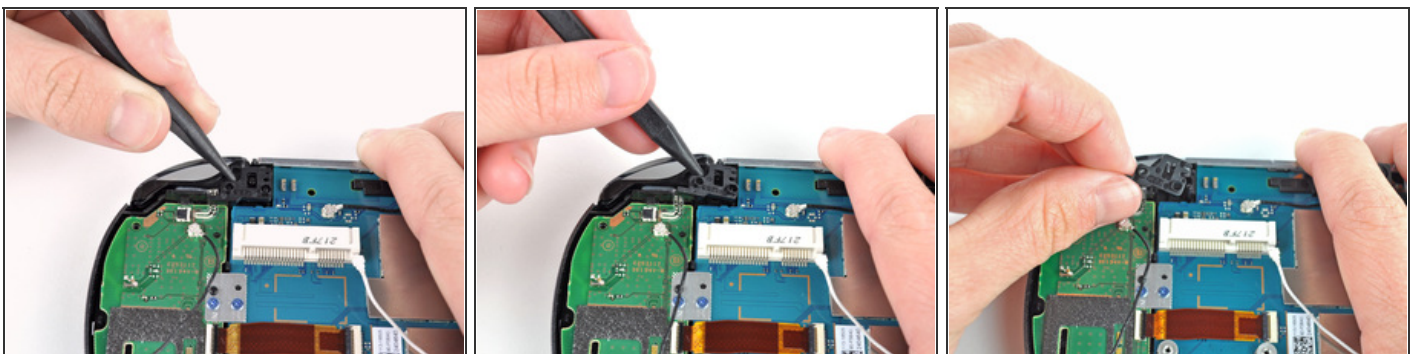
## Step 11



- Remove the two 4.4mm Phillips #00 screws on the wireless card.
- The wireless card will naturally pop out at an angle.
- Pull out the wireless card.

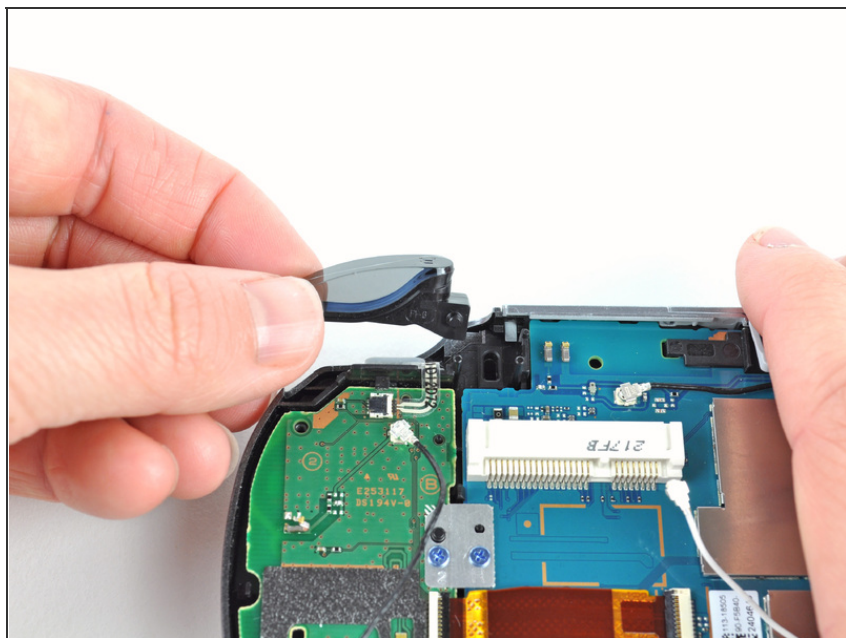


## Step 12 — Right Shoulder Button



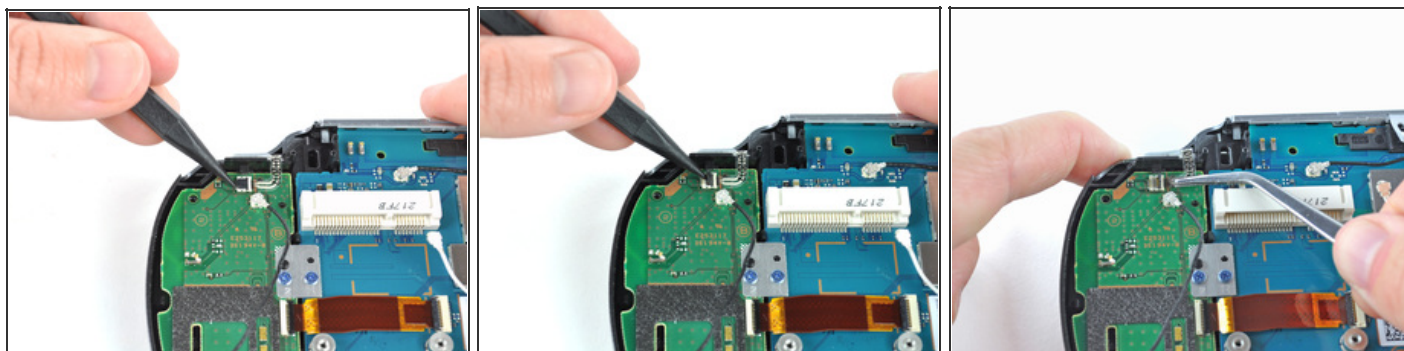
- Pry up the right shoulder button casing with a spudger and set it aside.

## Step 13



- Remove the translucent, plastic right shoulder button cover.

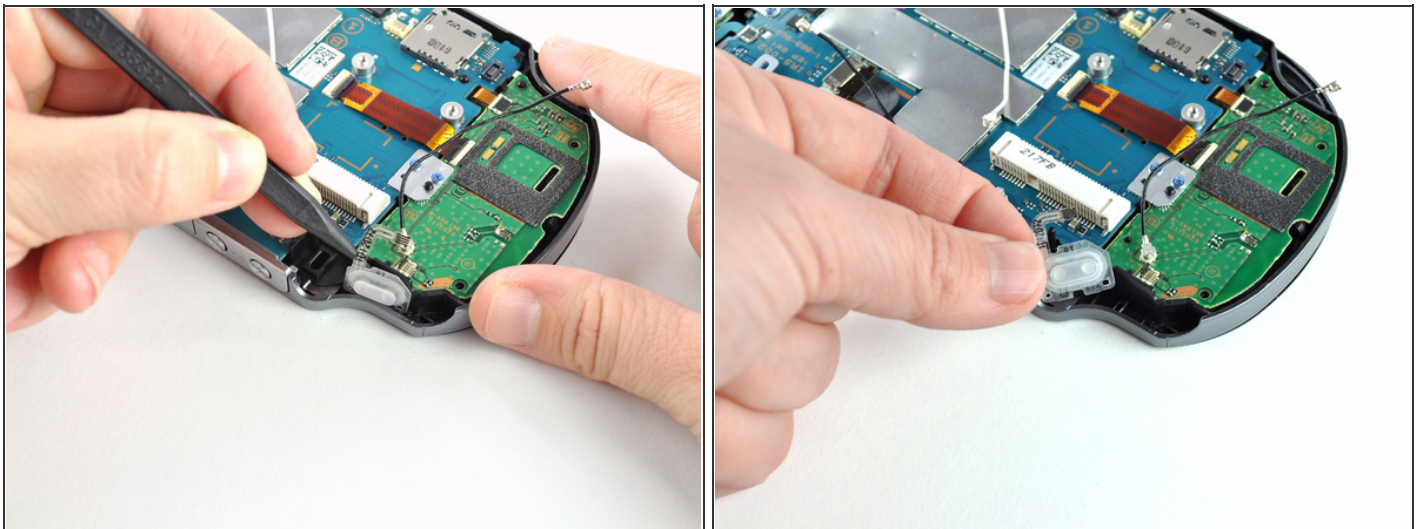
## Step 14



- Release the right shoulder button flex cable socket by using a spudger to gently pry open the tab.
- Using tweezers, slide the flex cable out of the socket.

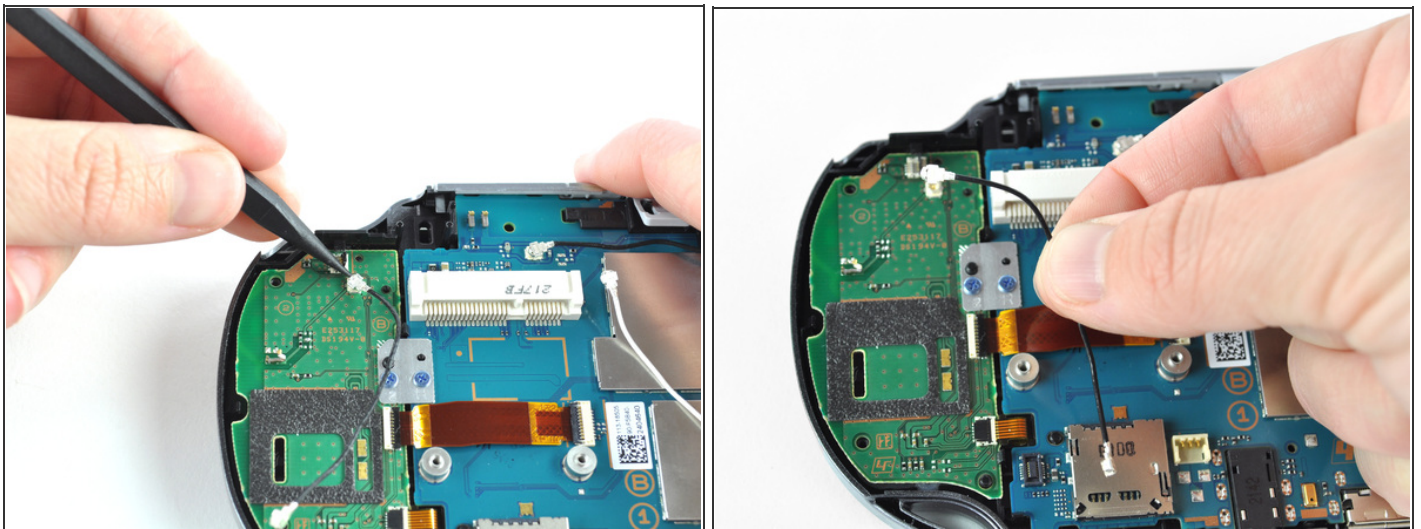


## Step 15



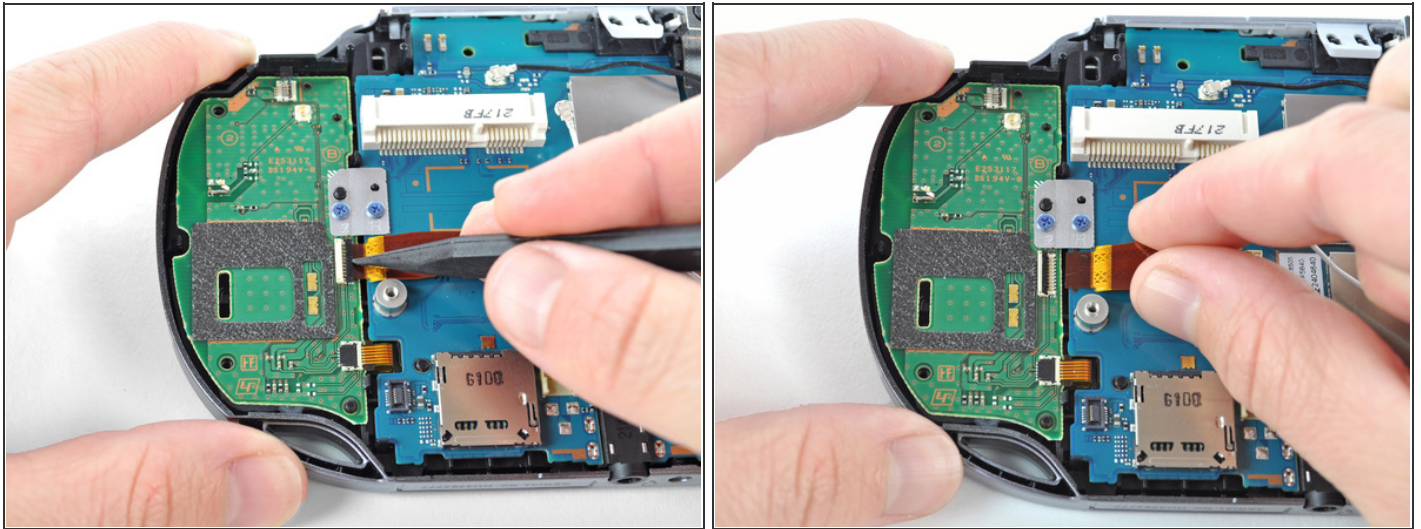
- Using a spudger, gently peel up the right shoulder button from the light adhesive connecting it to casing.

## Step 16 — Right Button Board



- Using the pointy end of a spudger, detach the antenna cable on the right button board.
- Remove the antenna cable.

## Step 17



- Using a spudger, pry up and release the ZIF socket on the right button board.
- Gently pull the flex cable out of the socket. Rest the flex cable out of the way.

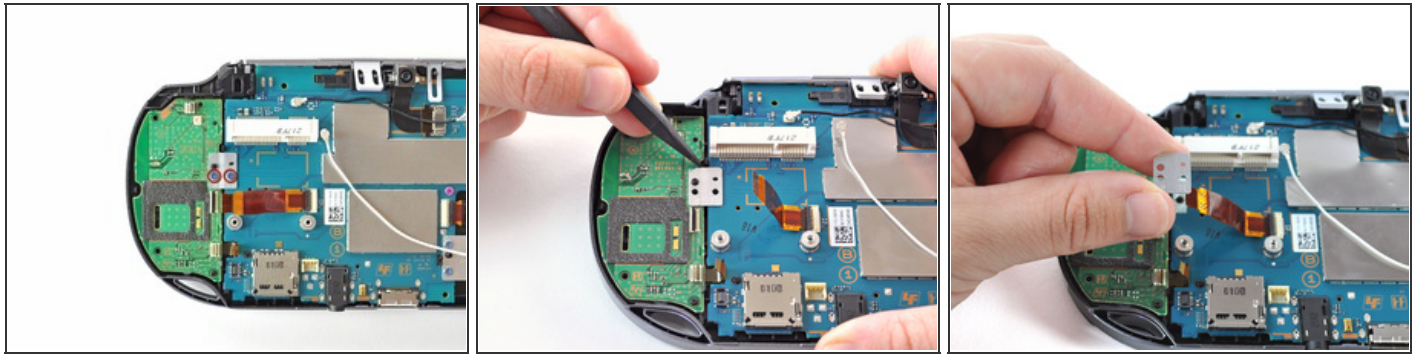
## Step 18



- Release the tab on the small flex cable socket by prying up the tab with a spudger.
- Using tweezers, gently pull the flex cable out of the socket. Rest the flex cable out of the way.



## Step 19



- Remove the two 5.0mm Phillips #00 screws from the metal bracket securing the right button board to the motherboard.
- Remove the metal bracket, using a spudger as necessary to lift it out.

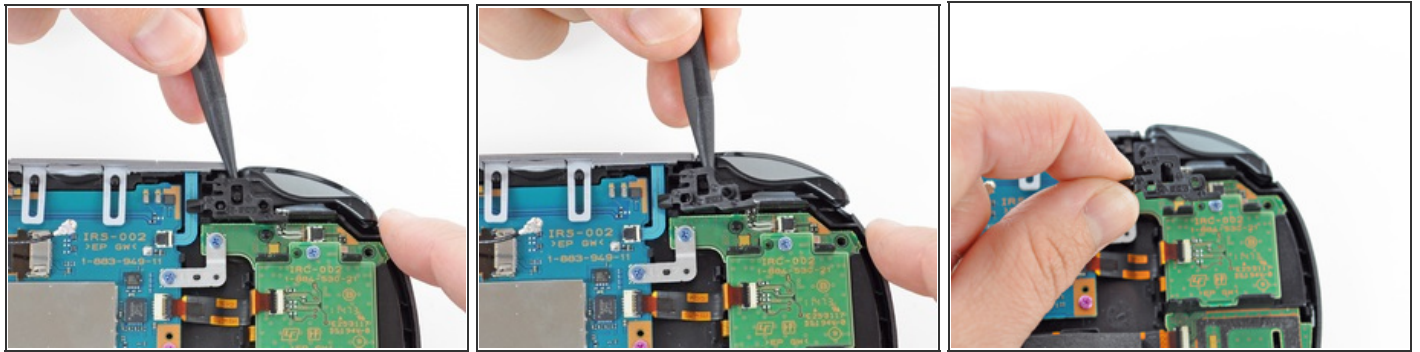
## Step 20



- Use a spudger to free the right button board by prying up from the bottom right corner of board.
- Gently lift the right button board out.

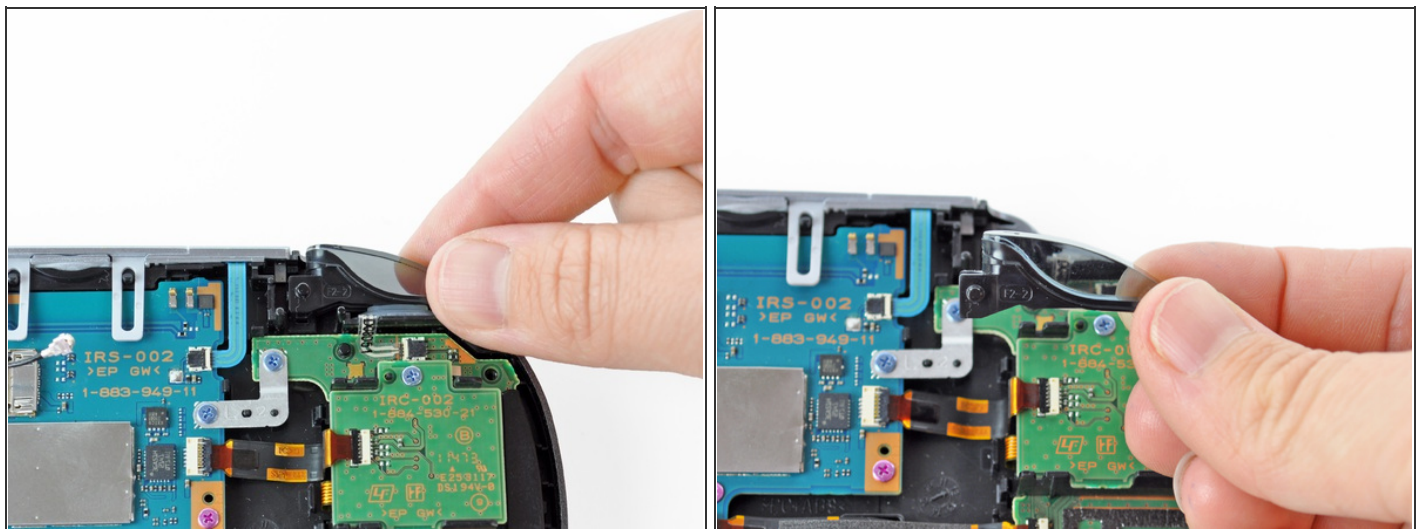


## Step 21 — Left Shoulder Button



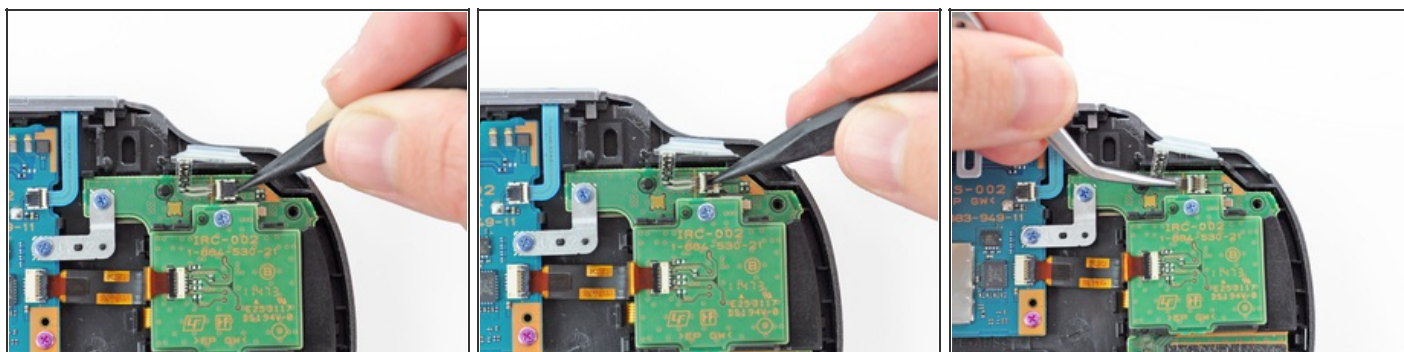
- Pry up the left shoulder button casing with a spudger.
- Remove the left shoulder button casing.

## Step 22



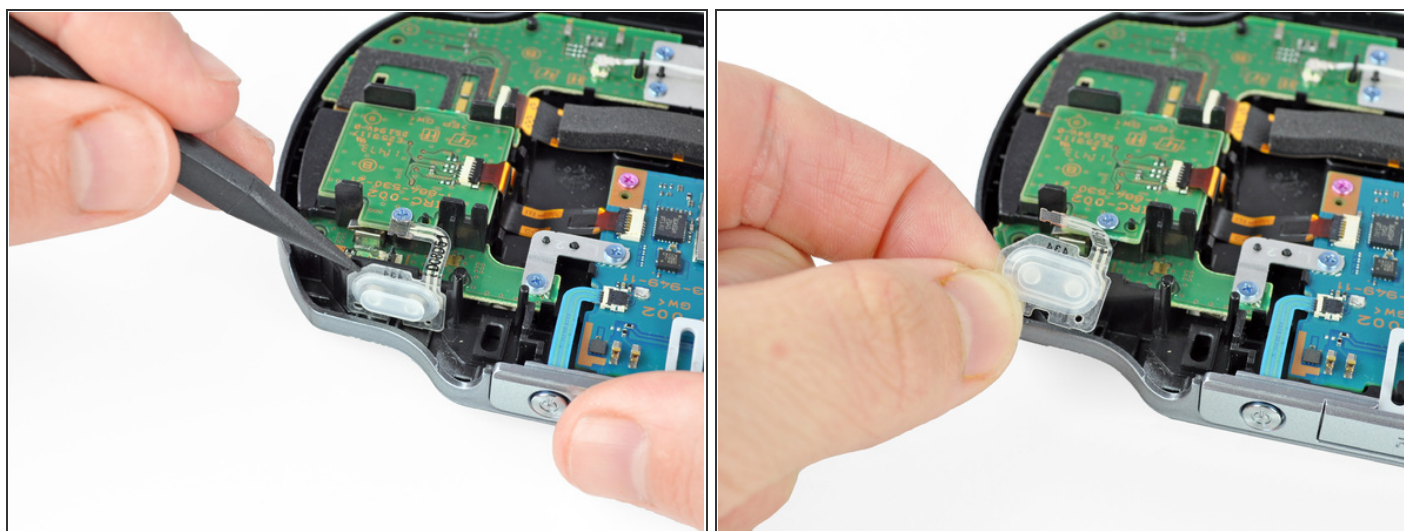
- Remove the translucent, plastic left shoulder button cover.

## Step 23



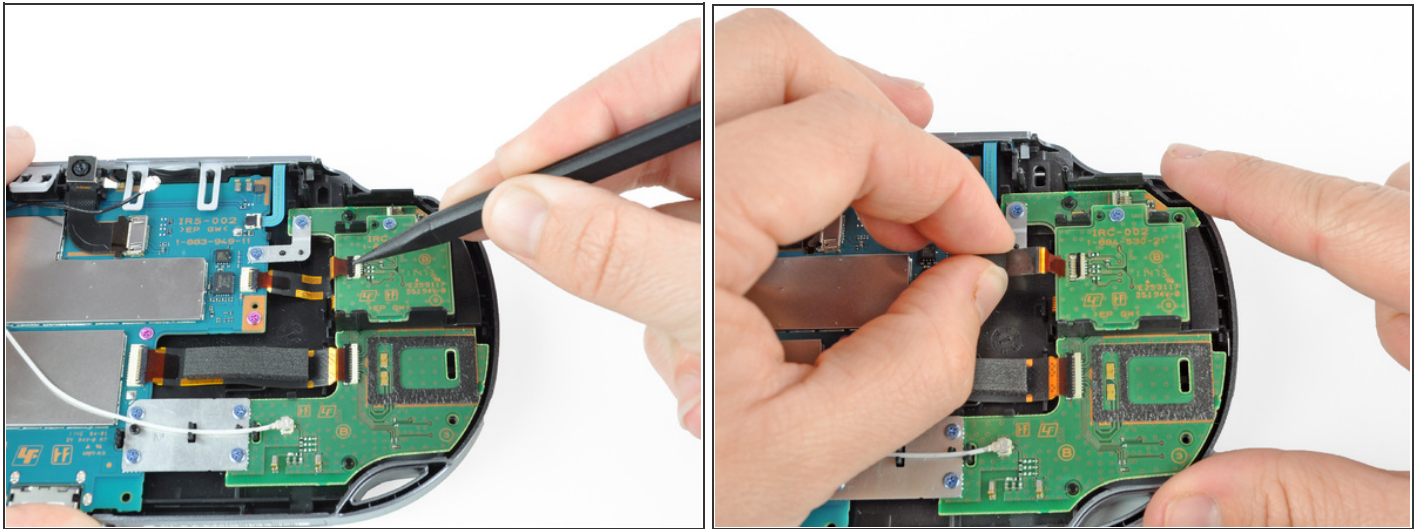
- Release the left shoulder button flex cable socket by using a spudger to pry open the tab.
- Using tweezers, slide the flex cable out of the socket.

## Step 24



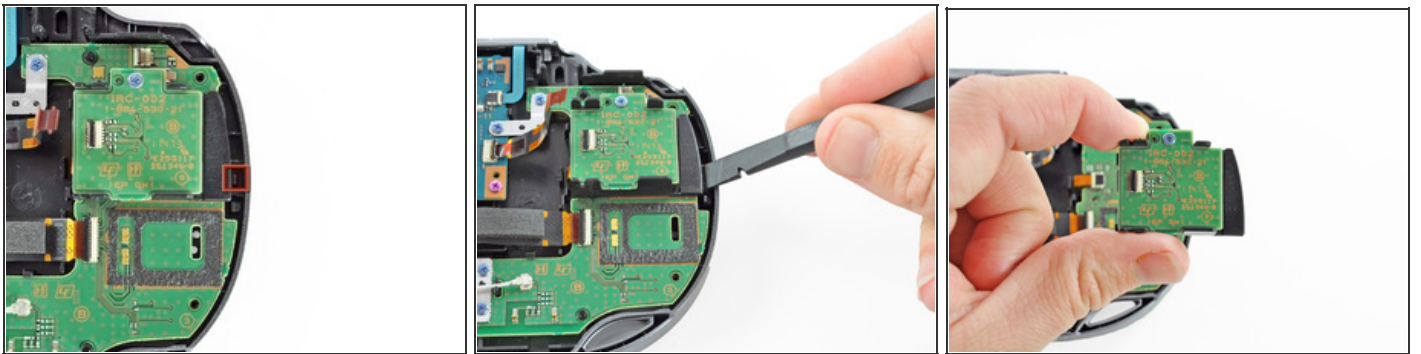
- Using a spudger, gently peel up the left shoulder button from the light adhesive connecting it to casing.

## Step 25 — Left Button Board



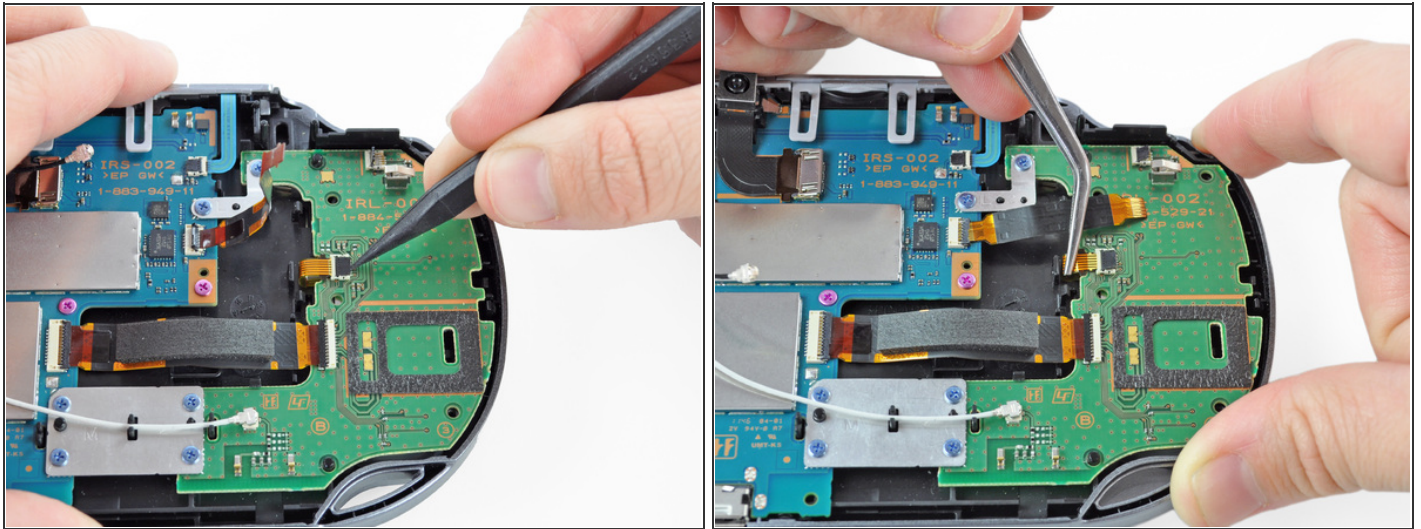
- Using a spudger, lift and release the tab on the ZIF socket sitting on the SIM card reader.
- Carefully pull the flex cable out of the ZIF socket, and rest it out of the way.

## Step 26

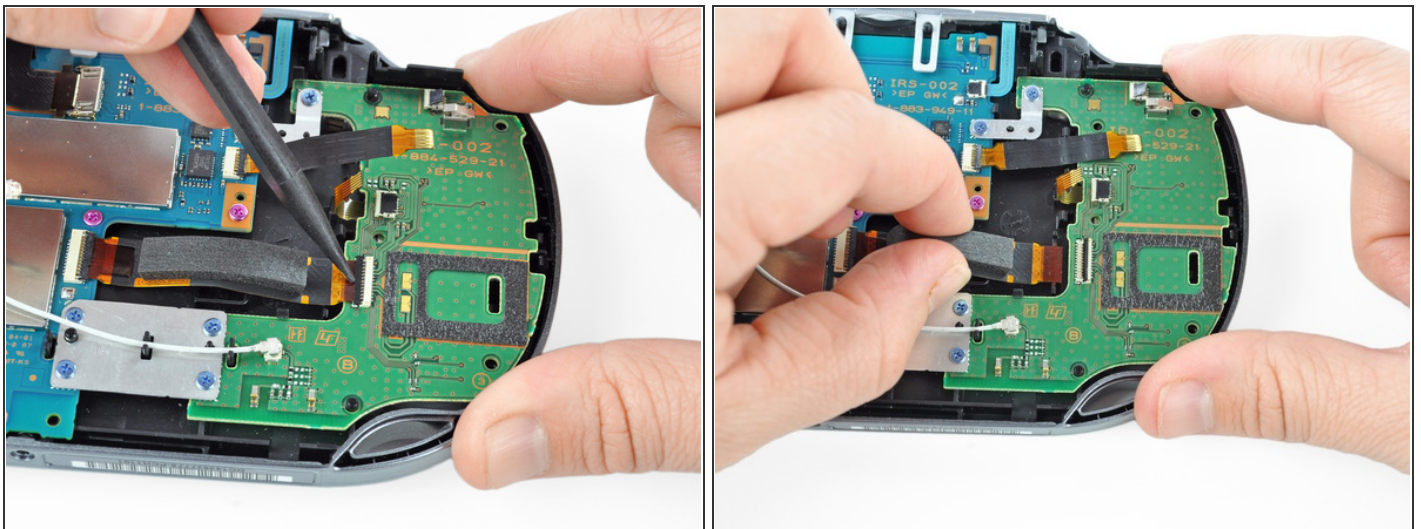


- Use a spudger to release the tab between the SIM card reader and the back casing assembly.
- Lift the SIM card reader off the back casing assembly.



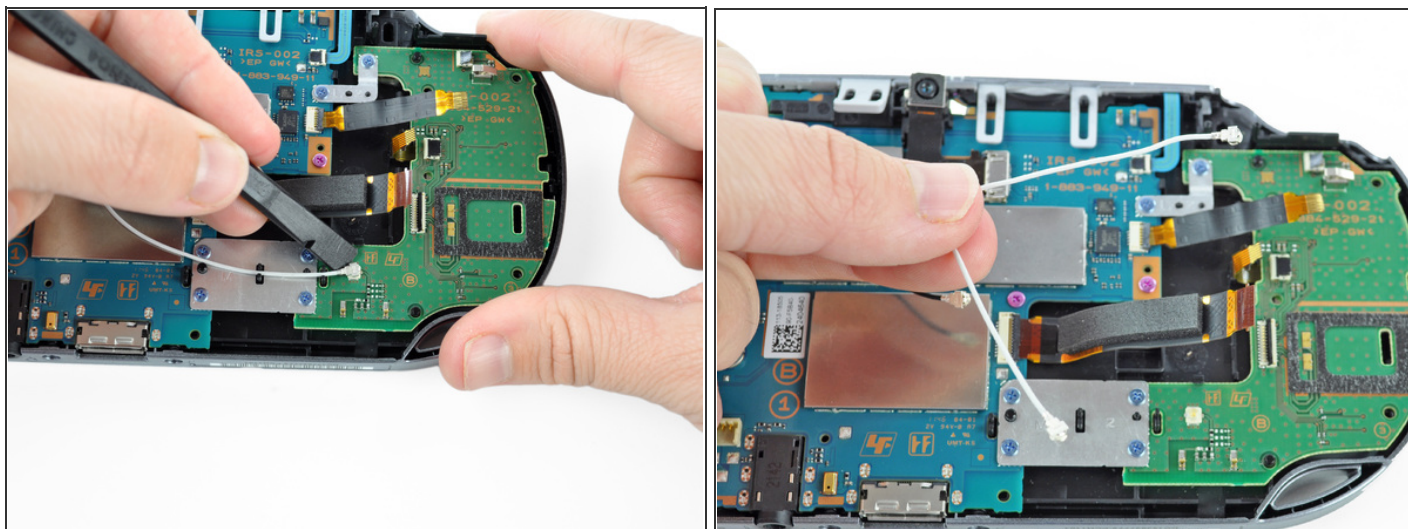
**Step 27**

- Release the plastic tab on the small flex cable socket by prying it up with a spudger.
- Using tweezers, gently remove the small flex cable from the socket, and rest it out of the way.

**Step 28**

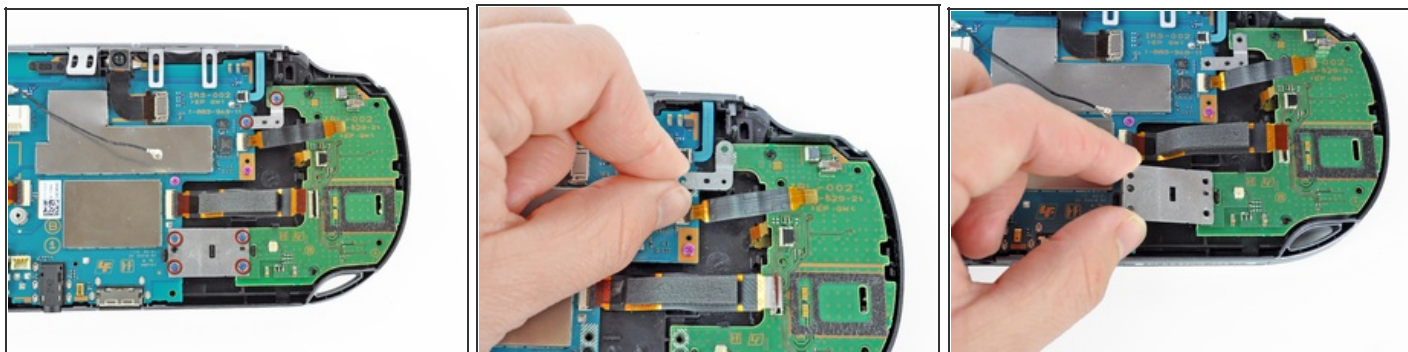
- Use a spudger to lift up the tab on the large ZIF socket.
- Gently pull the flex cable out of the ZIF socket, and rest it out of the way.

## Step 29



- Disconnect the white Wi-Fi antenna cable with a spudger.
- Remove the Wi-Fi antenna cable.

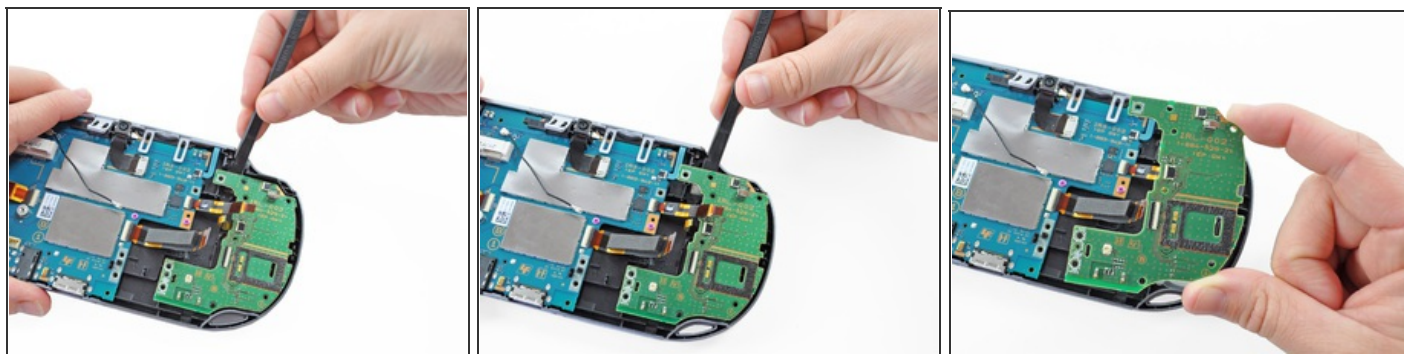
## Step 30



- Using a Phillips #00 screwdriver, remove the six screws on the two metal brackets:
  - Two 5.0mm, blue screws on the L-bracket securing the upper left button board to the motherboard.
  - Four 5.0mm, blue screws on the square bracket securing the lower left button board to the motherboard.

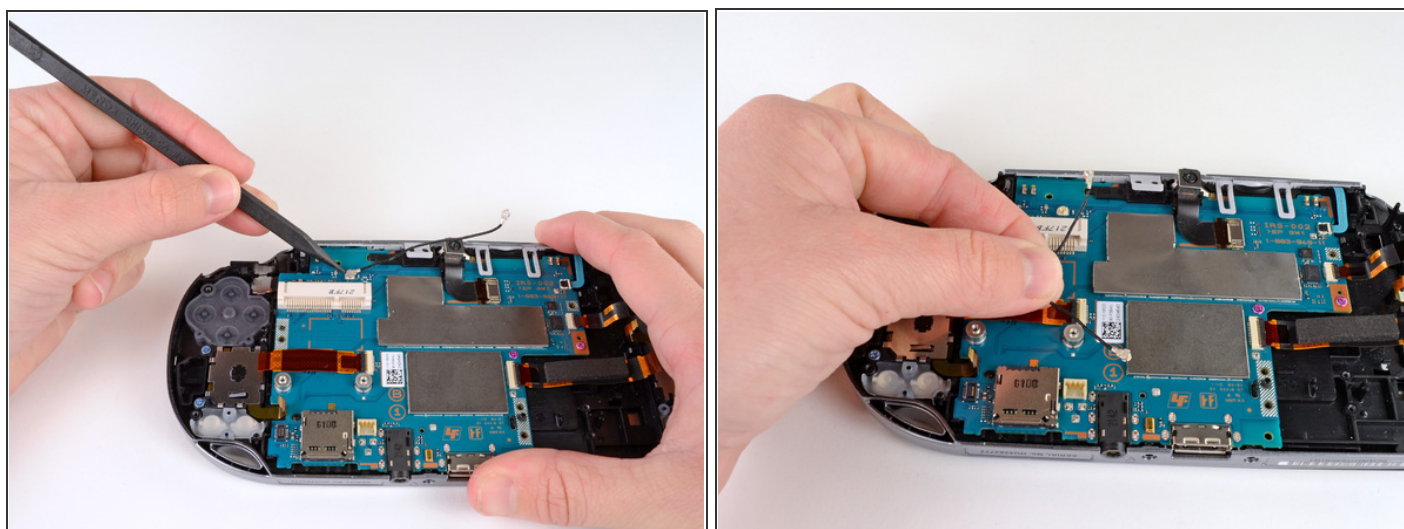


## Step 31



- Starting from the upper left corner, use a spudger to pry up and remove the left button board.

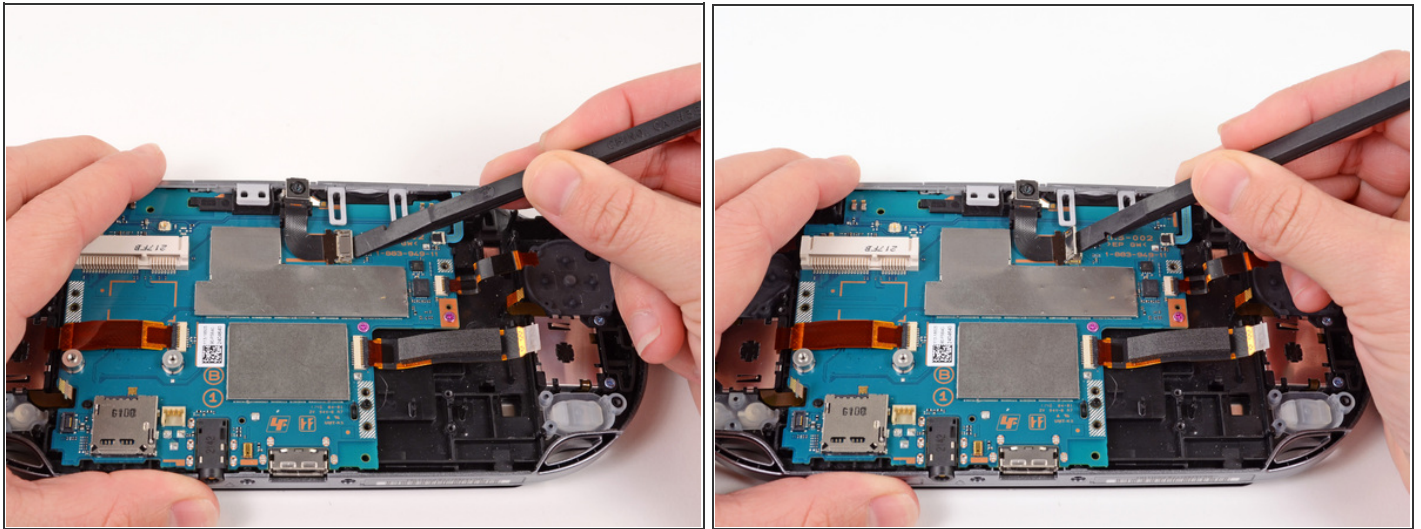
## Step 32 — Motherboard



- Using the pointy end of a spudger, pry up and release the GPS antenna cable from the motherboard.
- Remove the GPS antenna cable.

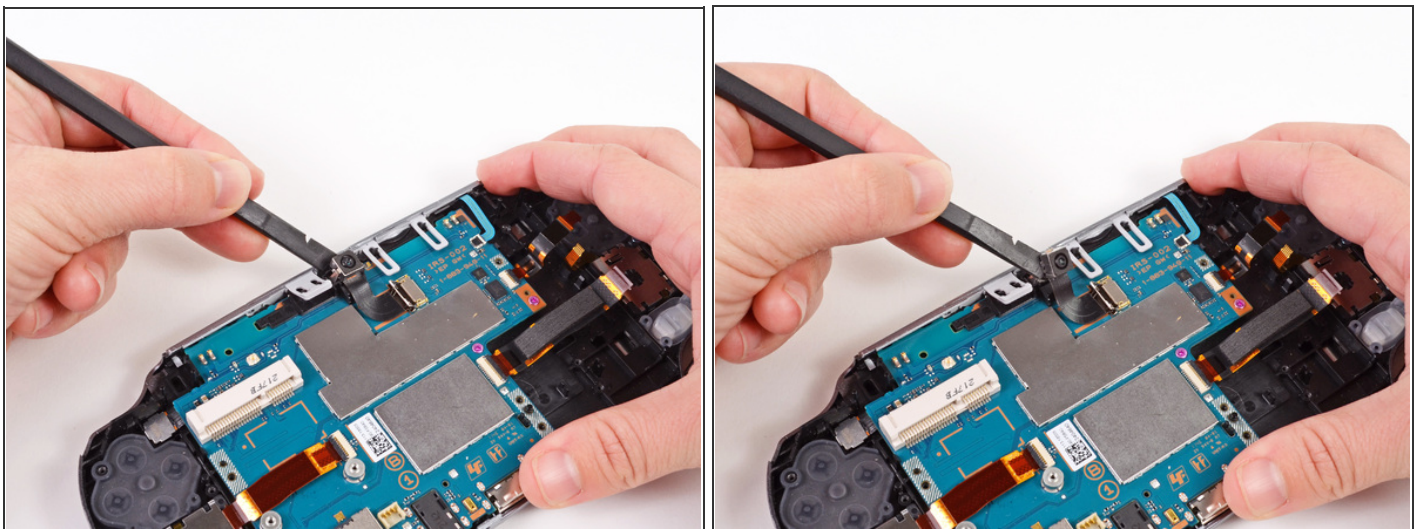


### Step 33



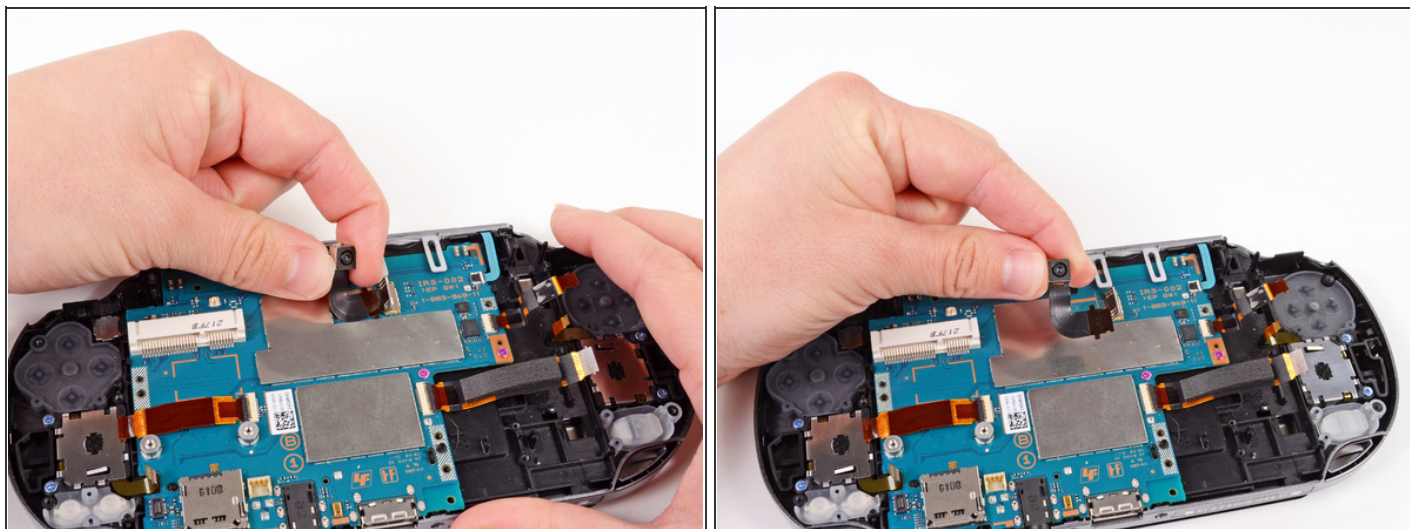
- Release the camera flex cable socket by prying up on the tab with a spudger.

### Step 34



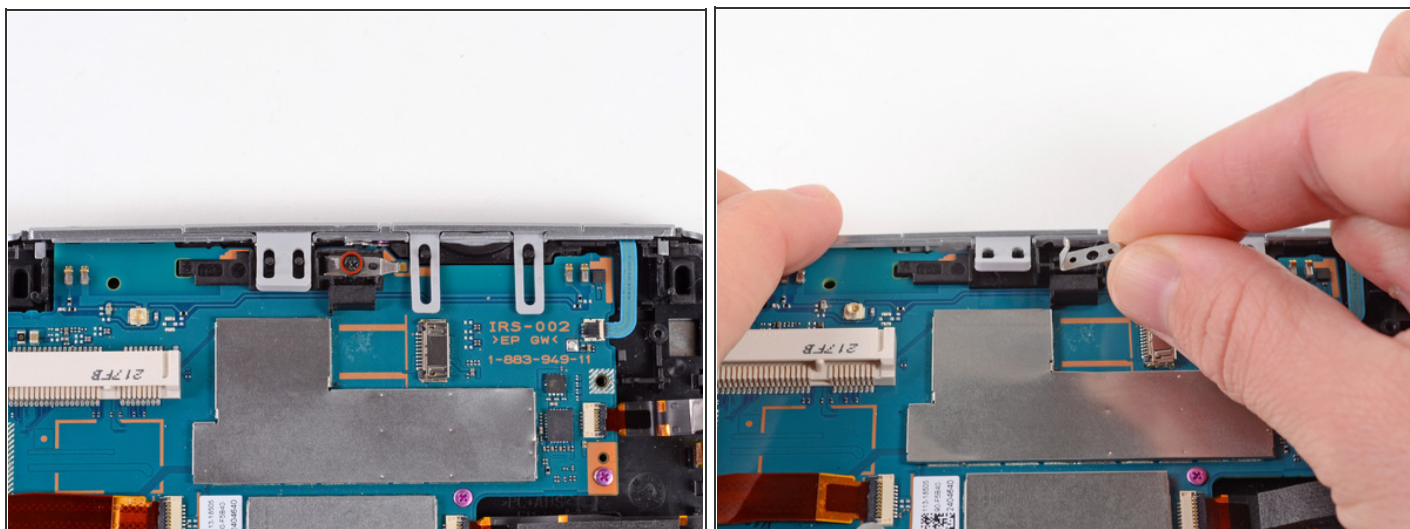
- Using a spudger, gently pry up on the camera.
- Work your way under the camera and along the camera flex cable, using the spudger to peel away the adhesive, freeing the camera.

## Step 35



- Carefully lift and remove the camera, sliding the flex cable out of the open connector socket.

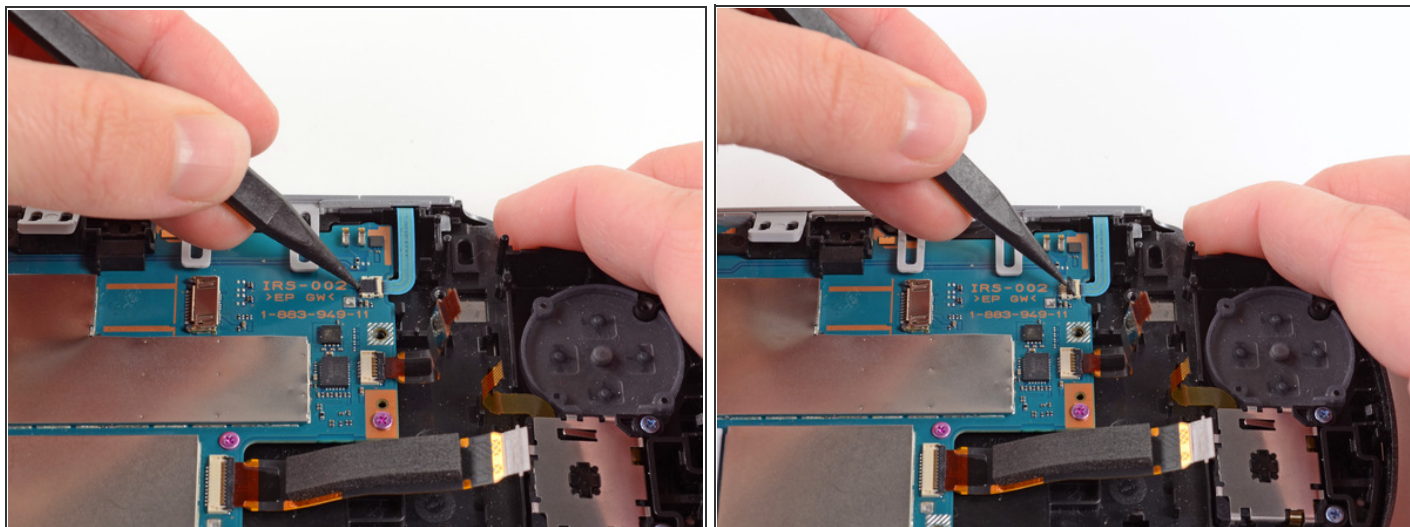
## Step 36



- Using a Phillips #00 screwdriver, remove the 6.3mm screw beneath the camera.
- Lift and remove the metal camera bracket.

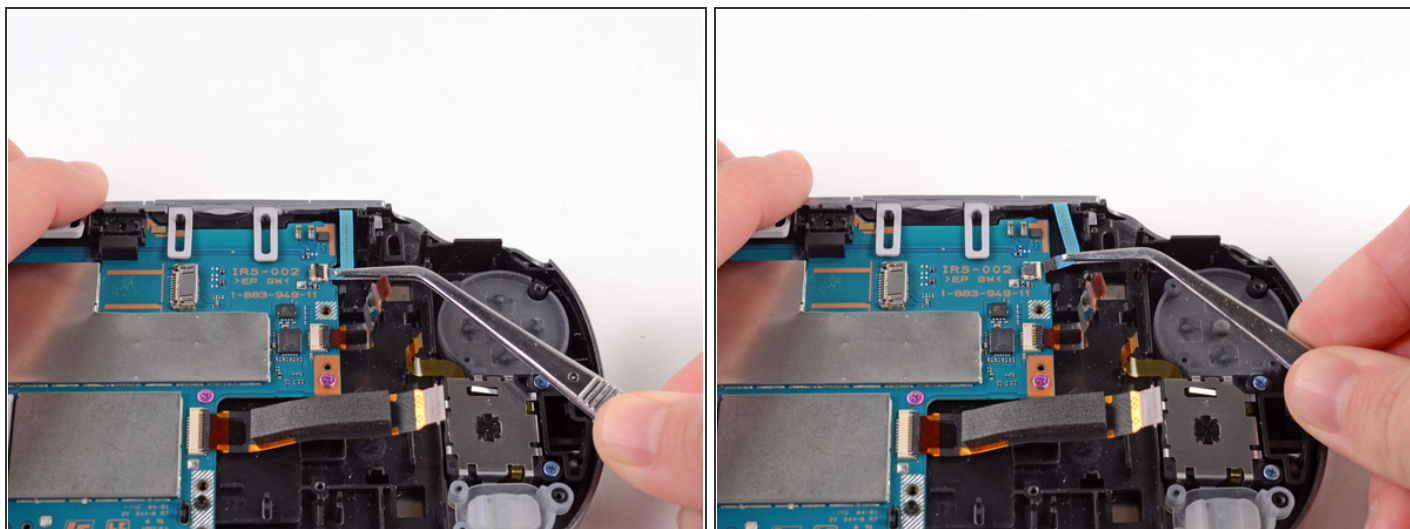


## Step 37



- With the help of a spudger, lift and release the tab on the blue flex cable socket.

## Step 38



- Using tweezers, gently pull the blue power flex cable out of the socket; rest it out of the way.

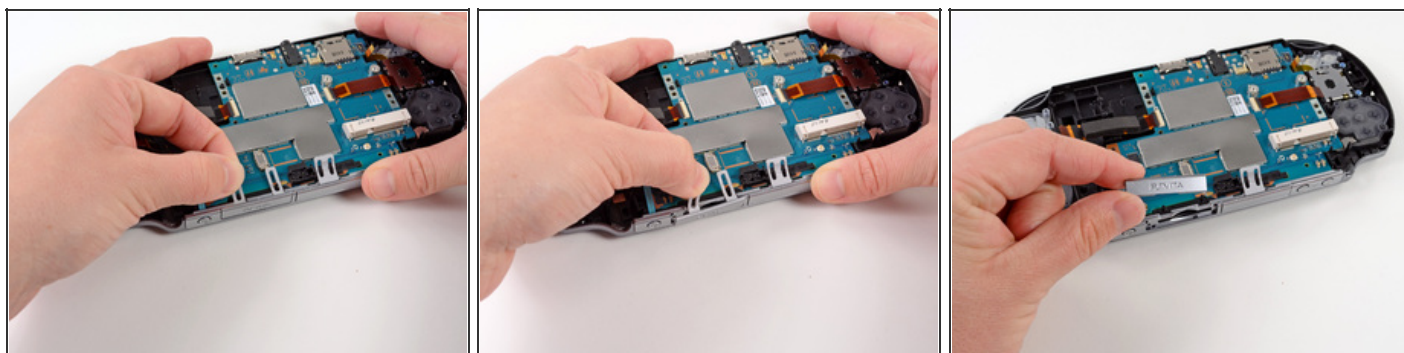


## Step 39



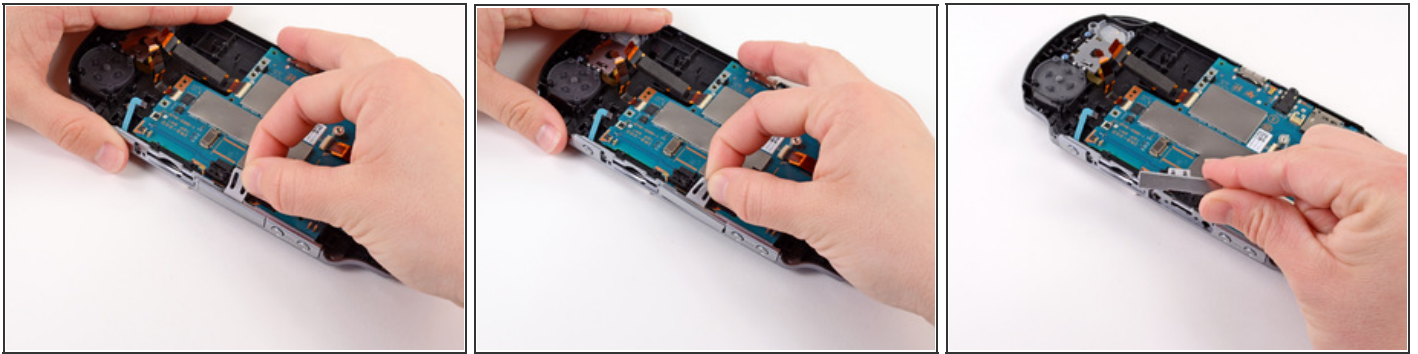
- Using a Phillips #00 screwdriver, remove the two pink, 4.4mm screws securing the motherboard.

## Step 40



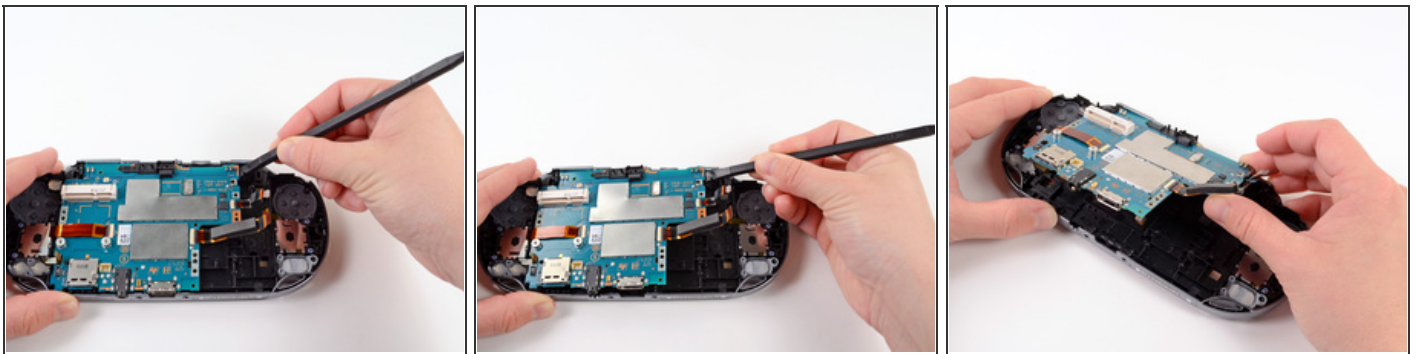
- Gently peel the rubber tab of the game port cover off the plastic casing pins.
- Remove the game port cover.


## Step 41



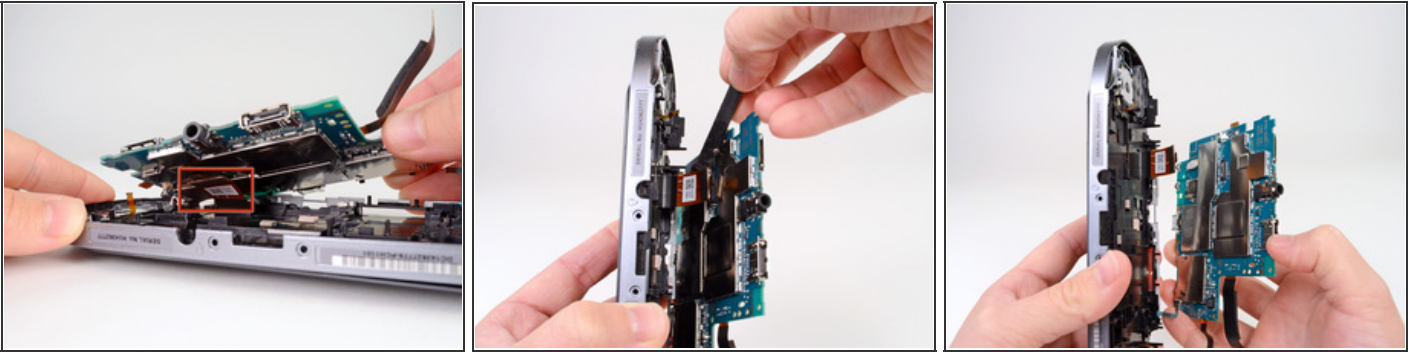
- Gently peel the rubber tab of the accessory port cover off the plastic casing pins.
- Remove the accessory port cover.

## Step 42



- Starting at the upper right hand corner, use a spudger to gently lift the motherboard out of the casing assembly.
- The motherboard is still attached to the casing by a connector on the back of the motherboard. Do not pull the motherboard all the way out, or you may damage the connector. 

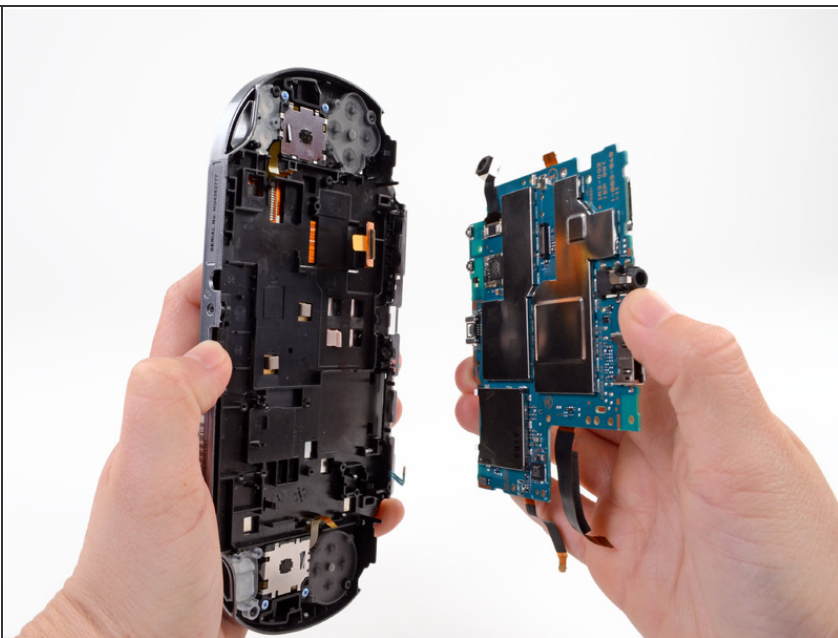
## Step 43



- Lift the motherboard out and identify the OLED connector still attaching the motherboard to the casing.
- Holding the Vita on its side, use a spudger to gently pry off the OLED connector from the motherboard.
- Be sure to hold the motherboard while you release the connector as this will free the motherboard. If you are not holding the motherboard, it will fall.



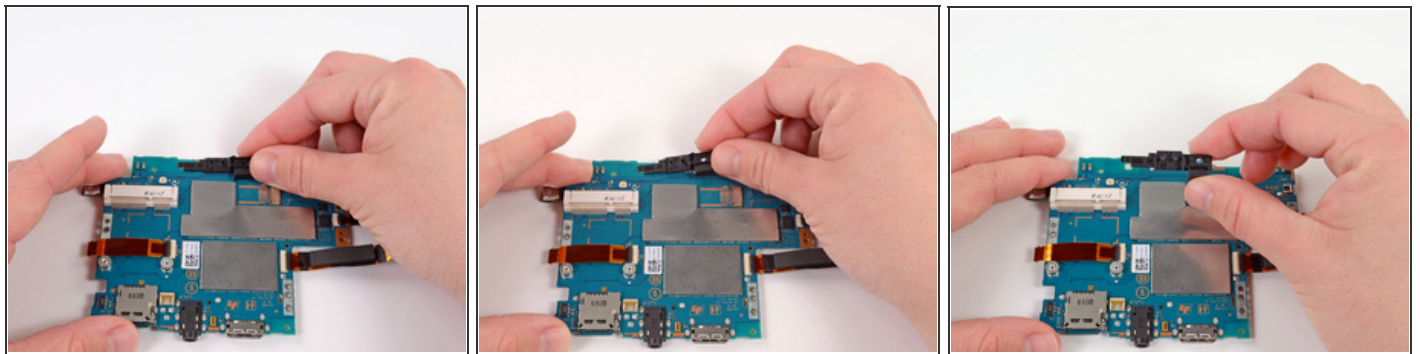
## Step 44



- Completely separate the motherboard from the case. Remove the case.

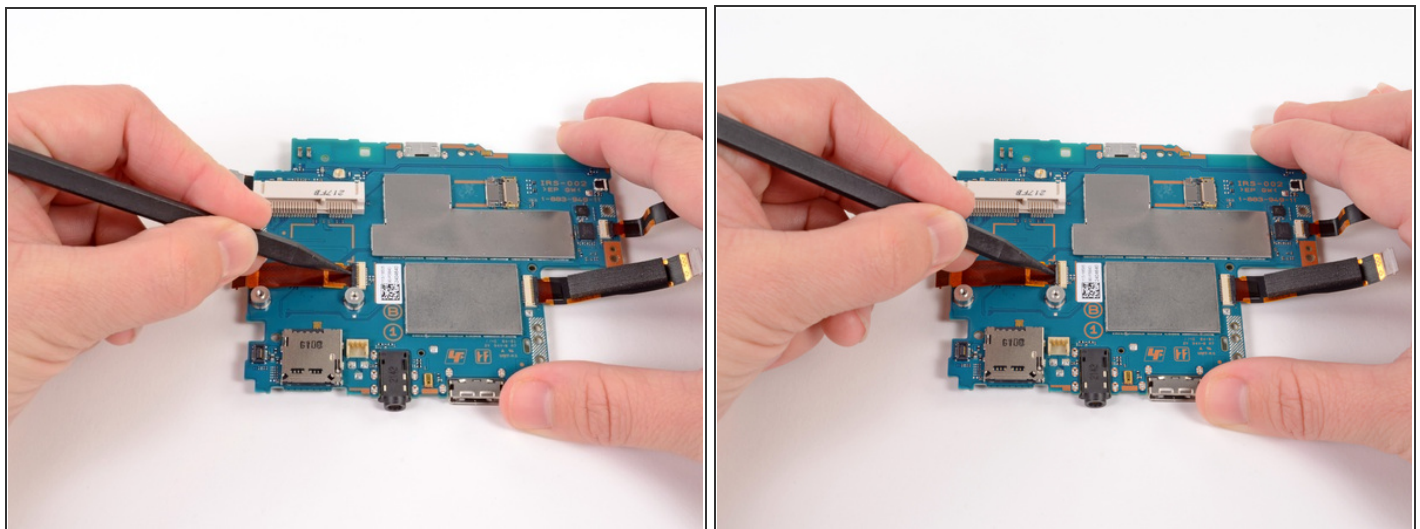


## Step 45



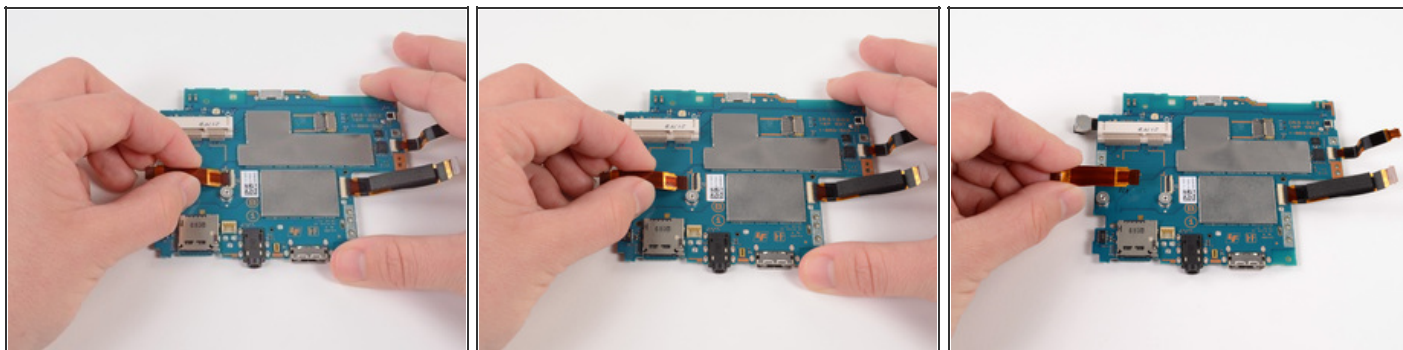
- Starting at the right side, gently lift and remove the black casing that once held the camera.

## Step 46



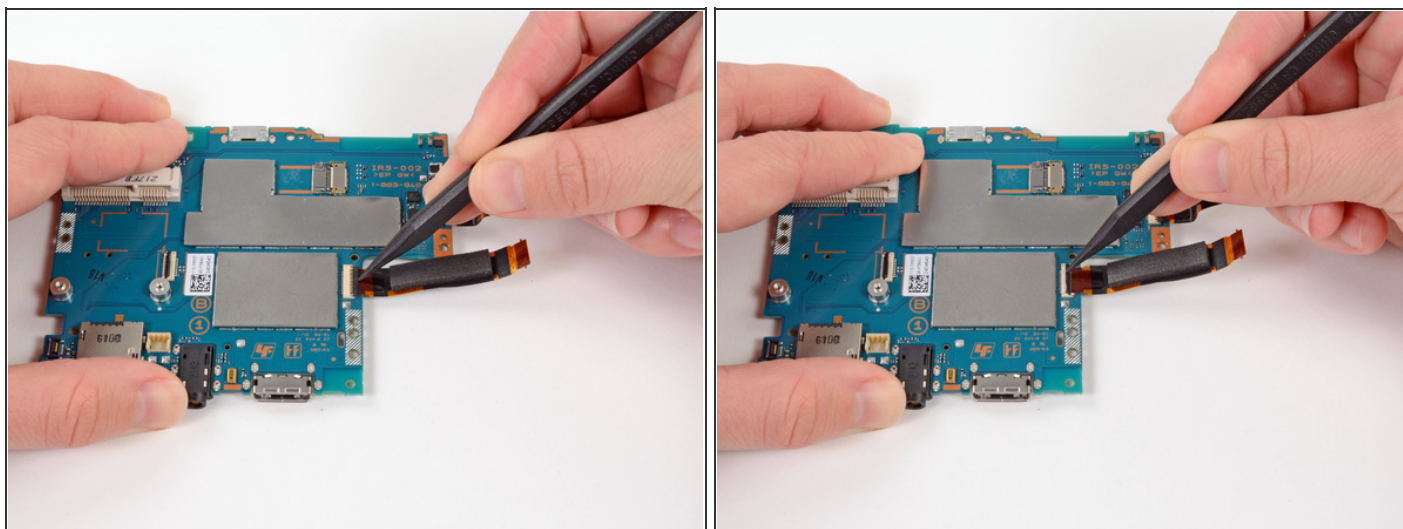
- Using a spudger, release the tab on the ZIF connector located above the two screw posts where the wireless card once was.

## Step 47



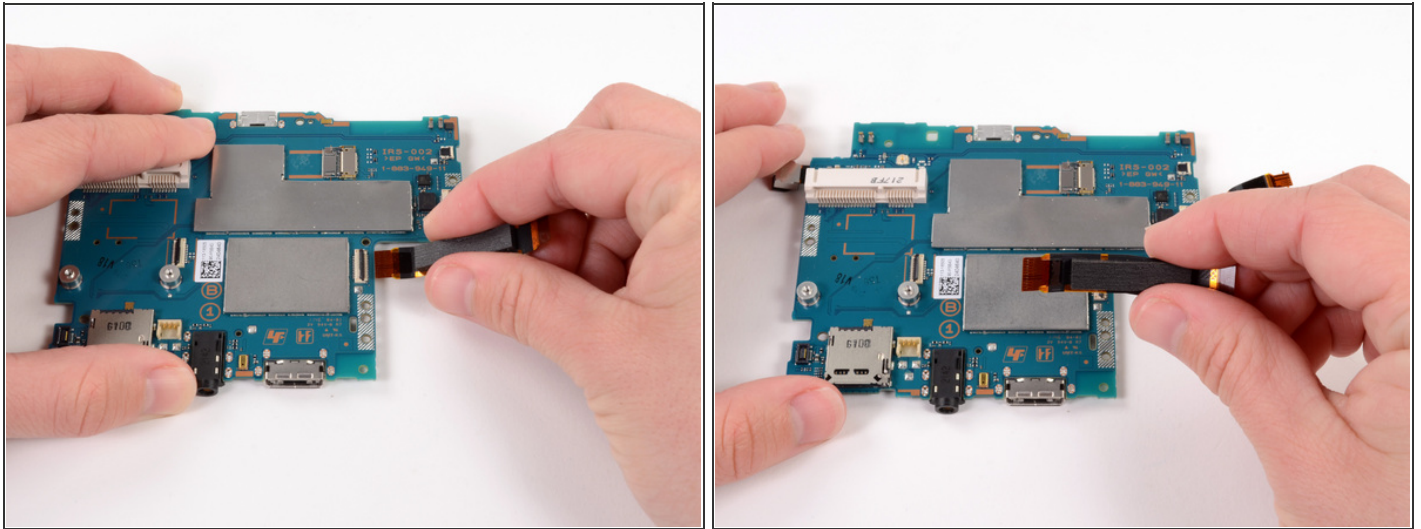
- Gently pull the flex cable out of the ZIF connector, and remove it.

## Step 48



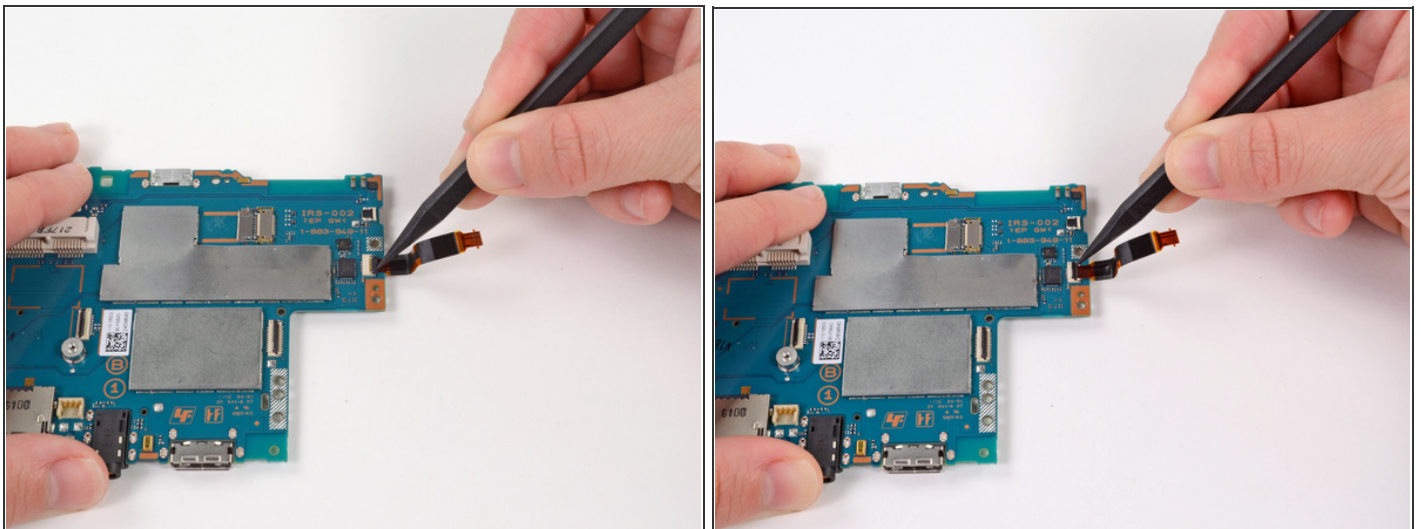
- Release the tab on the large ZIF connector on the right side of the motherboard by lifting the tab with a spudger.

## Step 49



- Gently pull the flex cable out of the ZIF connector, and remove it.

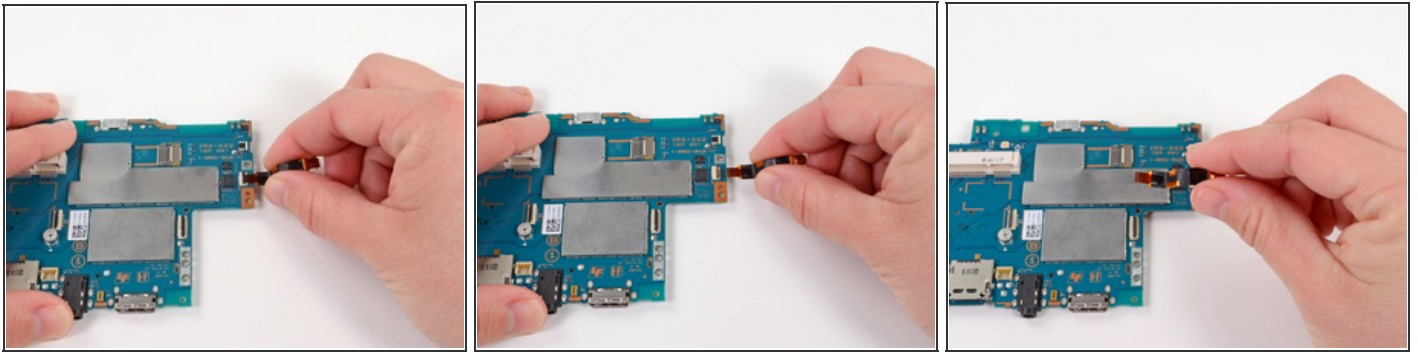
## Step 50



- Using a spudger, release the small ZIF connector on the right side of the motherboard.

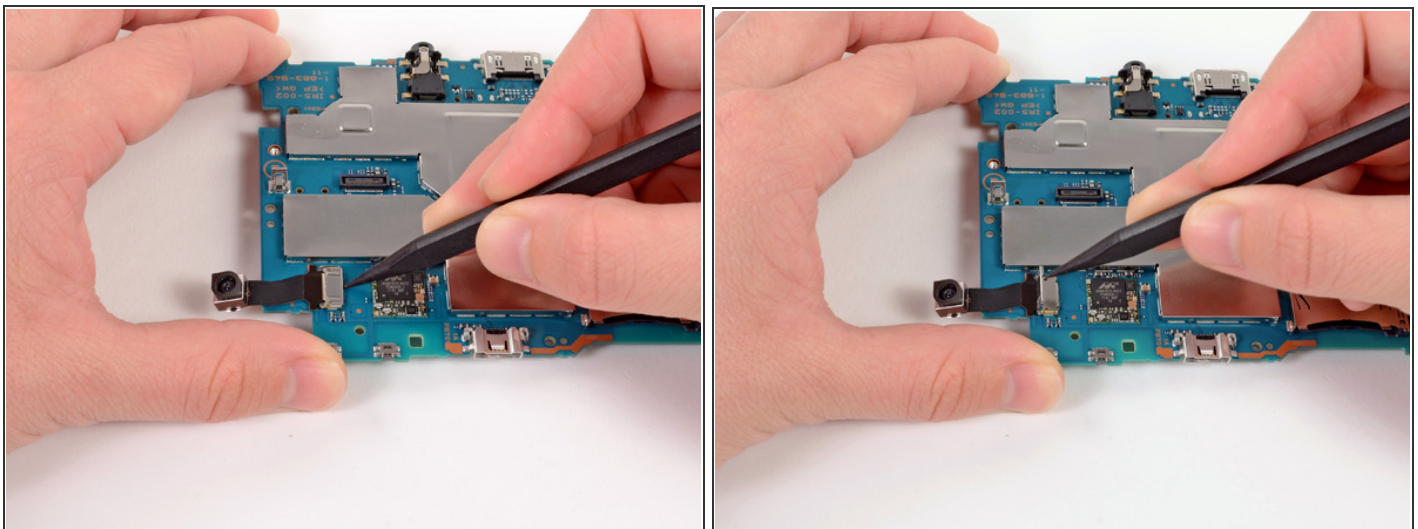


## Step 51



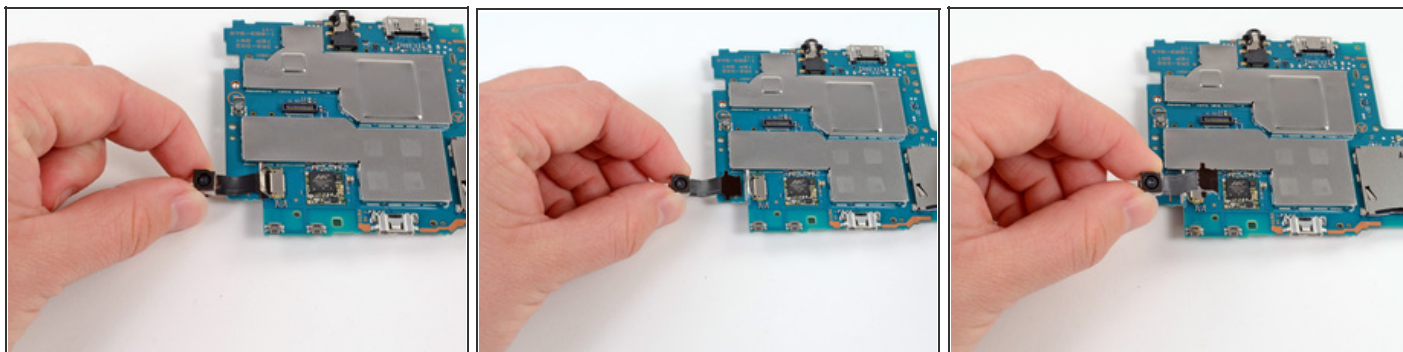
- Gently pull the flex cable out of the small ZIF connector, and remove it.

## Step 52



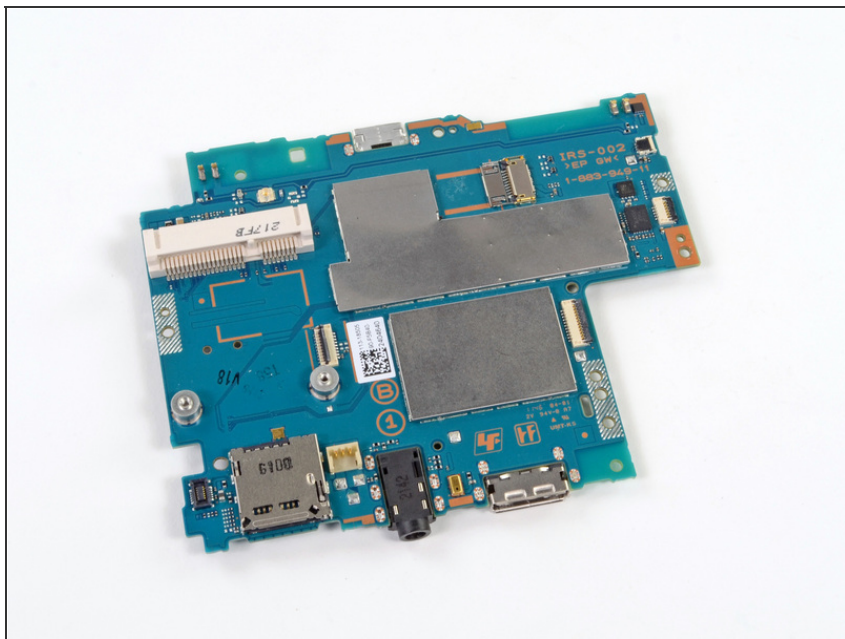
- Flip the motherboard over.
- With the help of a spudger, pry up and release the tab of the rear camera flex cable connector.

## Step 53



- Gently pull the rear camera out of the connector and remove it.

## Step 54



- The motherboard remains.

To reassemble your device, follow these instructions in reverse order.

This document was last generated on 2012-10-31 12:26:02 PM.